

ANNUAL REPORT 2020/21



March
2021

KILANERIN-BALLYFAD COMMUNITY
DEVELOPMENT ASSOCIATION



Report on the activities of the Community Development Association

Annual Report 2020/21

KILANERIN-BALLYFAD COMMUNITY DEVELOPMENT ASSOCIATION

CHAIRPERSON'S ADDRESS

There will be an AGM on Monday 6th September 2021 to report on the financial year to March 2020/21 and to highlight KBCDA associated activities in 2020. Despite the great adversity facing the community, I am pleased to report that there has still been a significant amount of activity, much of the work focused on maintaining a safe community and completing the work packages that had been previously grant funded while also applying for further grants where possible.

A Youth Facilities Grant from WLD, managed by our out-going Chairperson Jason Last, successfully provided for a suite of teenage-friendly equipment, including foosball, pool, cinema screen and projector and 'lounge' seating. This was the result of local engagement with relevant age groups to define their requirements for social interaction in the KCC.

Funding from Raheenleagh Wind Farm supported the supply and installation of Covid-19 protections across the community, including foot and hand operated sanitising pumps at Ballyfad Hall, KCC and Kilanerin playground and the Community Field, widening of the walking track, provision of self-service coffee facilities at KCC and provision of disposable masks to be distributed within the community.

It was with regret that we saw the departure of the Cosy Cottage Café from KCC. We wish Timea and Frank all the best and thank them for their time and dedication in helping to make the community centre an inviting space.

Tara Studios, a new film studio, submitted a planning application to develop a world class studio in the grounds of Borleigh Demesne. Following public access to the EIAR in the community centre, and listening to the voices in the community, we supported this application along with other groups in Kilanerin. Regrettably, the application was objected to at local planning level and we await An Bord Pleanála's decision in September/October 2021.

Since KCC Phase II has opened, the gym has been a popular and well-used amenity. Our physical and mental health has been shown to be so important to us, especially during times of adversity and challenge. Unfortunately, due to government restrictions and for the safety of all, KCC was forced to close a number of times, including the gym. We look forward to brighter and healthier days as the centre gradually opens up in line with government guidelines.

The Committee of the Development Association extends its sympathy to the families of those supporters and contributors who have passed away during the past year, and to all in our community who have suffered loss.

Thank you to Jason Last for his patient and tireless contributions to the committee and the community in general and to Peter Bushe who has put in many years of dedication in his role as treasurer. I look forward to continuing success with the new treasurers, secretary and vice-chair.

Yours sincerely

Julie Sammiller

Chairperson

CURRENT COMMITTEE

Chairperson	Julie Sammiller, Jason Last outgoing
Vice Chairperson	Cathal O’Sullivan (elected 2019), John Bardon outgoing
Secretary	Deirdre Sheriff (elected 2019),
Treasurers	Karen Curtis (elected 2019), Peter Bushe outgoing
Members	Padraic Caulfield Aileen Cooper Anthony Donohue Nicky D’Arcy Michael D’Arcy Mary Fleming Gráinne Hartnett Donal Hayden John Hegarty Elaine Hughes Seamus Hughes Jason Last Enda Kavanagh Dolores Murphy Dave Naughton Pat O’Connor Peter O’Connor Fionntán Ó Súilleabháin Julie Sammiller Deirdre Sheriff Karen Finigan Jane Hughes Niamh Kavanagh Michael McGonigle Ray McMonagle
CE Community Secretary	Tracy Kenny
CE workers	Pat Howard, Kevin Walker
RSS worker	Pat Sheehan
KCC Employees	Tina Gregory (Centre Manager), Irene Molloy
Bankers	Ulster Bank Gorey, Bank of Ireland, Carnew
Accountant	Donal Noonan, Michael Doyle & Co
Solicitors	Donal O’Sullivan & Co.
Architects	Enda O’ Leary

TREASURER'S REPORT TO MARCH 2021

Full audited accounts will be available for inspection at the AGM or by appointment

Kilanerin Ballyfad Community Development Association			
Income and Expenditure Account for year ended 31/03/2021			
Income :	€	€	
Voluntary Contributions	6,517		
Revenue rebate re contributions	1,620		
Sports Hall rental & Gym membership	20,160		
Birthday parties. Business centre & salon	7,964		
Coffee shop sales	476		
Sundry Income	750		
FAS, Arts & Woodland grant	923	38,410	
Other Income			
Mast site income	10,000		
Revenue - Covid wage rebate	11,440		
Grant received re lift, woodlands & sustainable energy	19,974	41,414	
Expenditure :	€	€	
Development Works - Lift	6,127		
Fixture, Fittings & Equipment	8,383		
Donations	250		
Local infrastructure & Woodland walks	3,400		
Insurance & service charges	5,554		
Wages	15,786		
Cafe resale Purchases	222		
Centre consumables	1,539		
Gym, repairs & party expenses	2,033		
Cleaning & repairs	6,760		
Bank Interest and Charges	5,443		
Office Expenses	1,398		
Telephone	2,168		
Accounts & Professional Fees	2,000		
ESB & Heating	7,937		
Sundry Expenses	94	69,094	
Excess of income over expenditure including capital items		10,730	
Decrease in creditors	15,698		
Increase in debtors	6,993	22,691	
Decrease after creditors/debtors movement		-11,961	
Bank Movement	€	€	
Opening Bank Balances Current a/c 01.04.2020	3,587		
Opening Loan Balance	-100,897		
Opening Members loans	-94,838	-192,148	
Closing a/c Balances Current a/c 31.03.2021	5,823		
Closing Loan Balance	-102,094		
Closing members loans	-107,838	-204,109	
Decrease in Bank Balances year ended 31.03.2021		-11,961	
Notes			
Income & Expenditure does not include depreciation or amortisation of grants			
Income and Expenditure includes capital items which will be reclassified in statutory financial statements			

ACTIVITIES REPORT

Community Centre - KCC

Last year, we reported that the Town and Village Renewal Grant of €54,000 has been used to complete the café, common areas, stores, a business centre and facilities for physical therapy. These facilities are being further augmented by a Youth Facilities Grant, with spending to be complete by June 2020. This has allowed the viewing area floor to be completed, and for a number of storage units to be incorporated, one of which will be used for storing fitness equipment, the other to be used for youth facility equipment including beanbags, games tables and film projection equipment. This development has also allowed a lobby to be created to the viewing area which reduced the noise transmission to the rest of the centre, including the business room. The business room is now complete, and a number of members of the community have started to use this as a hot-desk facility. It has also provided an office for the Kilanerin Group Water Scheme.



Hand sanitisation equipment provided by the Windfarm Community Fund

KCC Community Café (Cosy Cottage)

The entire community were very saddened to see the Covid-19 pandemic bring to an end to a very short lived relationship with the Cosy Cottage at KCC. Unfortunately, only a few short months after opening the Cosy Cottage were forced to close their doors in March 2020. It was not to be and with great regret the tough decision to not reopen was made. We wish Frank and Timea all the very best for the future.

Undoubtedly, the community missed the welcoming and vibrant atmosphere created by a working café on entering our centre, which was missing for most of 2020. The Café Committee are working hard at attracting a new tenant to our café space for the remainder of 2021. When the Centre reopens, members of the community are encouraged to use the self service options currently located in the KCC Café - there will be an honour system for payment.

Café Committee: Karen Curtis, Aileen Cooper, Deirdre Sherriff, Julie Sammiller and Elaine Hughes

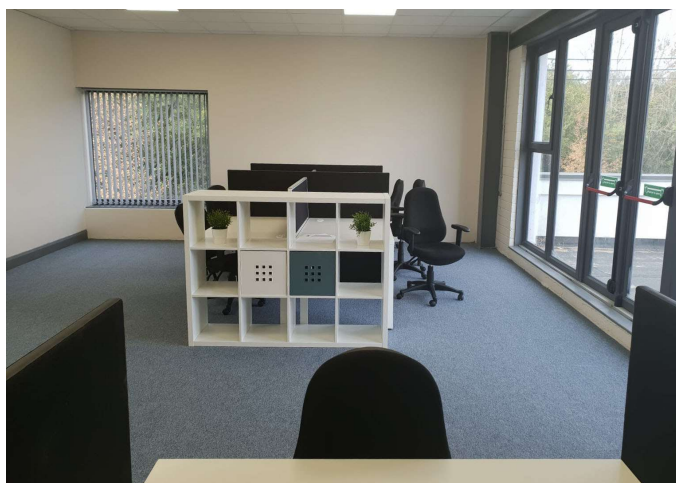
KCC Parties

KCC has been well known for its parties which were enhanced last year by two new developments; a party room directly connected to the sports hall and new ultrasafe bouncy castle. It has not been routinely possible to safely host parties in the centre during the pandemic, and whilst this has significantly impacted financially, the Committee are committed to safety first and will let the community know when parties are permitted routinely once again.

KCC WorkSpace / Business Centre

It is anticipated that the shared community workspace consisting of 12 dedicated workstations, 1 Private office and 1 Breakout / Meeting Room will continue to be of support to those in the community who are seeking a professional and well equipped quiet zone to conduct their business or work from home.

The Wifi installation has been further adapted to ensure high speed connections and again, restrictions pending, the committee would hope that the wider facilities of the centre including the community meeting room, gym and café will further augment the experience.



WorkSpaces @ KCC

Superb, newly fitted out shared community workspace Located at KCC Kilanerin Community Centre, Kilanerin, Gorey, Just off the N11.

Offering Hotdesk or dedicated DeskSpace to let on flexible short or long-term basis, with two meeting areas and On-Site Gym and Café.

HOT DESKING	DEDICATED DESKSPACE	MEETING & TRAINING ROOMS & EVENTS
<ul style="list-style-type: none"> • Flexible Hot Desking Space • High Speed e-Fibre Connection • Access to Meeting Rooms • High Speed Printing Facilities • Electricity, heating & rates included • On site Café • On-Site Gym • Free Parking 	<ul style="list-style-type: none"> • Permanent desk space • High speed e-fibre connection • Access to meeting rooms • High Speed Printing Facilities • Electricity, heating & rates included • On-site Café • On-Site Gym • Free Parking 	<ul style="list-style-type: none"> • Training Room Max 25 people • Large Meeting Room Max 25 People • Small Meeting Room Max 6 people • Large Hall /Conferences • Hourly, Half Day or Full day Bookings
PRICING	PRICING	PRICING
<ul style="list-style-type: none"> • €10 per day • €40 for one week • €150 for one month 	<ul style="list-style-type: none"> • €190 for 1 month • €170 per month if booking for 6M • €150 a month if booking for 12M 	<ul style="list-style-type: none"> • Hourly, Half Day or Full day Rates available on enquiry

Enquires to kcc.workspaces@kilanerin.com

Come in and TRY IT for a day

Launch DISCOUNT of 25% off

With the rural working strategic developments announced by the government, we would suggest those with an interest in using the space contact KCC now so that they can be prioritised on re-opening. A very small number of remote workers have continued to access the space during the pandemic – all within individual spaces and without hotdesking.

KCC Community Gym and Sports

KCC gym continues to flourish despite Covid interruptions. We're glad to report that KCC gym currently has approx 300 paying members, providing the area with an excellent modern facility to pursue health and well-being.

In the last year the gym was forced to close for 2 prolonged periods due to Covid restrictions. During these times 150-200 members continued to subscribe monthly, which greatly eased the financial burden for the association. KBCDA greatly appreciates the support of so many members during such challenging times and are committed to ensuring these members receive full value for money in the near future.

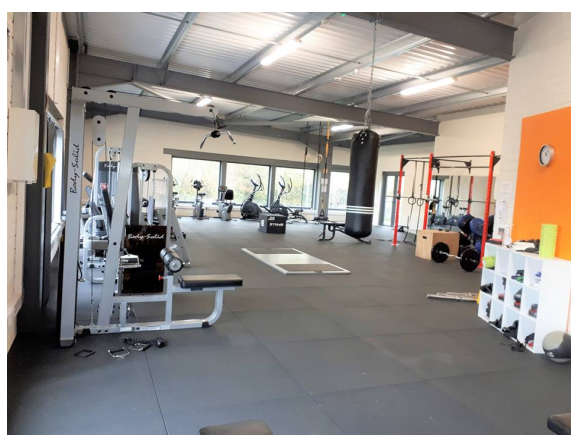
The gym continues to be a safe environment to exercise and stay healthy with no Covid issues reported. Thanks to Irene who thoroughly cleans the facility and the vast majority of members who clean as they go. Considering the competitive rates, the high standard of equipment and clean healthy environment we expect KCC gym to continue to flourish for the foreseeable future.

Improvements and additions to the gym continue to be made, including a major re-organisation of the layout, and these are based on feedback from members and from the gym sub-committee. As well as the KBCDA committee members, Jenny Connor, Keith Boland and Ross O' Loughlin as regular gym users have been co-opted onto the sub-committee and provide valuable insights and assistance which is much appreciated.

Membership rates/prices
 Single adult - €20/month
 Couple adults - €35/month
 Student - €15/month

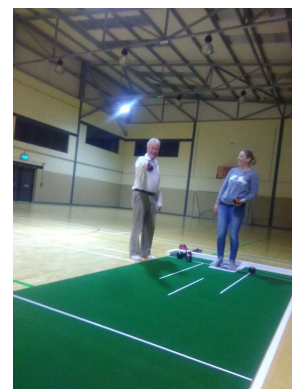
Annual upfront payment rates
 Single adult - €199
 Couple adult - €360
 Student - €160

Opening times 6am - 10pm daily
 Contact Tina - 0402-44555 Mon-Fri



brings an additional business dimension to the overall operation of the Centre. The sports hall has also been upgraded to incorporate basketball and indoor bowls equipment – the committee would particularly like to encourage their use.

Recent additions and innovation include a new Bluetooth sound system and smart TV which allows instruction videos to be shown. An application has been made to the Sports Capital scheme for funding for an additional major piece of cardio equipment as well as a set of spinning bikes, and we hope to have news of this application in the new couple of months. As well as providing a community facility the gym also allows qualified personal trainers to operate in a private capacity which



Gym Sub-committee: Peter O'Connor, Tina Gregory, Enda Kavanagh, Jenny Connor, Julie Sammiller, Keith Boland, Michael D'Arcy, Pat O'Connor, Ross O'Loughlin & Seamus Hughes

Sheltered Housing Kilanerin

Kilanerin Sheltered Housing Association, run by John Bardon and his committee (Annie Kent, Mary D'Arcy, Paddy Hughes, Brian Hughes, Donal Hayden), continues to operate the sheltered housing units opposite the new Centre. Throughout the past year, our committee continue to maintain the 6 houses with any repair or upgrade as they arise.

At the back of the houses, each resident had a small green area. However, the area could only be used during dry weather as it would get very wet and messy when walked on. We have removed the soil and the whole area has been cobble-locked. Each resident can now use as a seated area and all are very happy with this.

Sadly, in March 20 one of our residents, Nancy Kielty, passed away. We express our sympathy to the Kielty family on their sad loss. We have re-decorated the house and a new resident moved in and is very happy living in our community. They have family living in the village and are delighted to be living so close to them.

This was the aim when the houses were built. If anyone knows of someone who meets the criteria to go on our waiting list, you can contact John 086-2544745 or Annie 086-3895300. The criteria: over 55 years, on the housing list for Wexford County Council and can live independently.

Tidy Towns

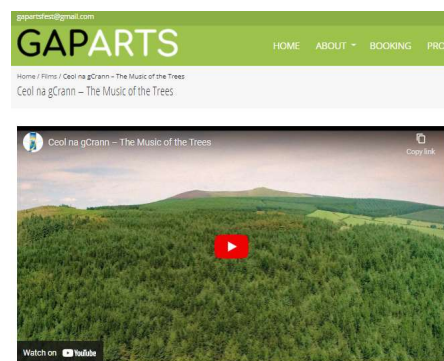


KBCDA continues to assist the Tidy Towns campaign by the provision of 3 Community Employment Program (CEP) workers and one Rural Social Scheme worker, who work on a range of maintenance and development projects. Kilanerin Tidy Towns has had a quiet year in 2021 as the activity was restricted due to COVID and the 2020 competition did not take place.

A number of projects to preserve and enhance biodiversity are currently under way and significant funding for a biodiversity survey of the village and surrounding area was obtained. Additional funding was obtained from POBAL and Wexford County Council. Thanks also to Gorey Municipal Council members and staff for their practical support and assistance.

Gap Arts Festival

KBCDA is delighted to have been able to continue support the Gap Arts Festival through a limited yearly sponsorship and administrative support. This year, the festival incorporated activities for all age groups, with memorable performances throughout. Festival-goers were enthralled by the hilarious comedy play *To Hell in a Handbag* and the extraordinary talents of local and international classical musicians. A grand piano had to be carefully transported to Ballythomas National School where it was manoeuvred into place to provide an appropriately expert instrument to BBC Young Musician of the Year 2018 finalist Adam Heron. He was accompanied on violin by a local friend of equal talent, the Clonegal-born Christopher Quaid. The duo led a memorised audience through a series of classical pieces, and some famous film scores in addition to providing a musical accompaniment composed by Trevor Knight to a slide show of the images that form the European Rural Inspiration Award-nominated Gap Community Photo Portrait Project.



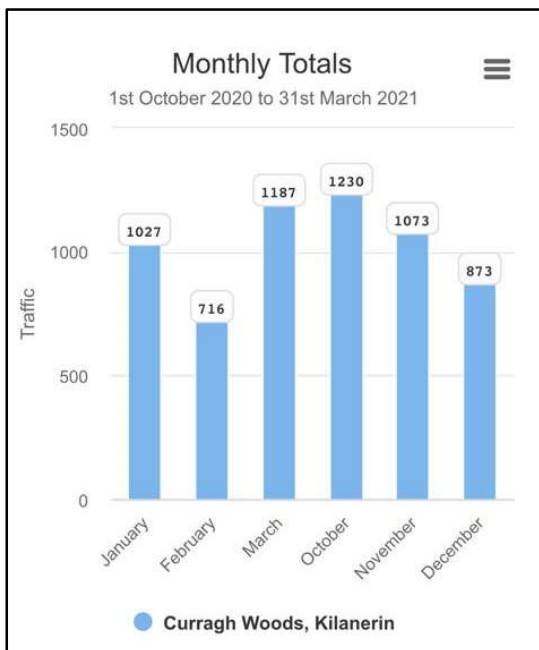
The Gap Arts Festival 2020 is delighted to invite you to join us in the online premiere of two short Covid-related films.

On Friday October 9th at 8pm, the Festival will present the Facebook Live Premiere of *Cool na gCrann*, *The Music of the Trees*; and *Life Under Lockdown*.

Community Gain Fund

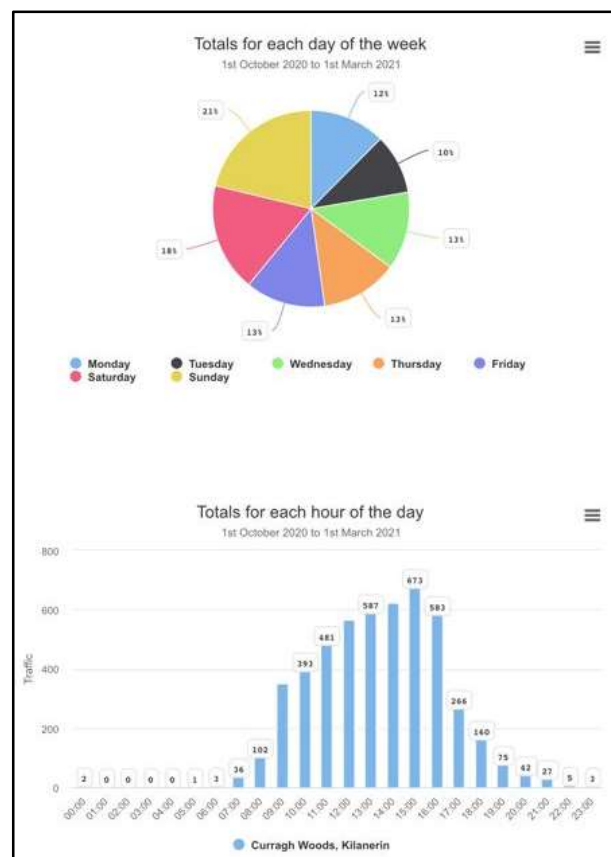
A total of €13,500 was awarded this year from the Windfarm fund to 3 projects in KBCDA area, A car park at the White Heaps for the Croghan walking Trails, improvements to Ballythomas Community Field and for further work on the community environmental project at Barrachcroghan. Total windfarm funding obtained since the start of fund for projects in KBCDA area is over €300,000. The main projects which received multi-annual funding are Ballyfad Hall (€95,000) and the All-Weather pitch Kilanerin (€90,000).

Woodland Walks



The Woodland Walks at Kilanerin, Curragh, Ballyfad and Croghan continue to be used extensively both by local users and visitors from the wider Gorey-Arklow area. A visitor counter was installed at Curragh Wood by Wexford Walking Trails in September 2020 as part of a LEADER funded scheme and shows that there are around 1,000 visits monthly to Curragh Wood (see graph). Similar numbers would be expected for Kilanerin Wood and the Croghan trails receive almost 3,000 visits monthly. These figures illustrate how important a local amenity the woods are.

Unfortunately Coillte Land Solutions have continued their piecemeal disposal and privatization with now approximately 50% of the woodland in the wider Kilanerin sold off and no longer publicly accessible. This makes it all the more important to use and preserve what remains as a local amenity and biodiversity sanctuary. Discussions have been initiated with Coillte about changing the status of the remaining woodland to recreational use but progress has been limited so far.



In January 2021 flash floods caused a lot of damage to part of the bottom trail in Curragh Woods (see photo). With the help of emergency funding KBCDA obtained from Wexford Walking Trails and the Raheenleagh Windfarm fund the trail was expertly cleared and resurfaced by Carroll Plant Hire with extra drainage put in place. The bridge was also displaced at this time and re-seated by local volunteers. Surfacing of the access point from the Inch Road was also carried out by local volunteers. Our thanks to Bruce and Stephanie Johnson for permission to access Curragh via their property during the resurfacing work.



Also, in January work began on the new 8.5 km Annagh Trail by the Gap Heritage and Tidy Towns Group. This work was funded by Raheenleagh Windfarm Community Fund as well as ORIS funding via Wexford Walking Trails and Wexford County Council, and supported by KBCDA. This trail is due to be fully accredited by Sport Ireland in August/September 2021 and will give spectacular views across Wicklow, Wexford and the Irish Sea. Extensive development of trails and other features has been carried out in Ballyfad Wood by the local Coolgreany Group. A new car park dedicated to horse users only was opened by KBCDA in Newtown Wood as part of the development of an equestrian trail in this area. ORIS funding has also been obtained by KBCDA via Wexford Walking Trails and

Wexford County Council for surface improvements on the Kilanerin Trail and for an improved bridge across the river in Curragh Wood.

General maintenance and monitoring are carried out and reported to Wexford Walking Trails and Sport Ireland by the KBCDA Woodland Walks Working Group throughout the year and this year trimming of the upper and lower trails in Curragh was carried out by Coillte, as well as work by CE and RSS workers as well as by local volunteers. Our continued thanks to Liam Stafford and Jesper Petersen of Coillte Forestry for their help and co-operation with all of the above projects.

KBCDA Governance Committee

A new committee has been set up to bring KBCDA into alignment with the Ethics and Governance requirements for the charity and not-for-profit sector. In 2018, the Charities Regulatory Authority took on responsibility for establishing the standards for good corporate governance for charities and in November 2018, it published a new Charities Governance Code with which all charities will be expected to start reporting their compliance by 2021.

KBCDA started on the journey to compliance by establishing a small committee to review our current status and recommend the enhancements needed to bring our group into full compliance by 12/2020. During 2019 the team reviewed all KBCDA practices, held a workshop to include full committee in the review. The outcome of the work suggests a number of areas to be revised/updated:

1. Addition of statement of purpose and integrity statement, code of conduct in the Constitution
2. Development of an induction pack for new committee members
3. Development of written roles & responsibilities for everyone working in, or for, KBCDA
4. Development of a procedure, available to all in the community for queries, comments, complaints

This will be the main work for the Governance Committee in 2020. The group also proposed wording for incorporation into the deeds of KCC. Revised wording for the KBCDA constitution, and the paragraph to be incorporated into the deeds will be reviewed for possible inclusion at the AGM:

Statement of Purpose

'To develop inclusive local facilities and projects which sustain our community and community spirit.'

For Inclusion in Kilanerin Community Centre Deeds

'The Community Centre in Kilanerin is an entity built by the community, to be run by the community for the use and benefit in perpetuity for all members of the community; never to be sold or to be appropriated by any individual, group or institution.'

Maintenance Sub-Committee

A new working group, the maintenance sub-committee, including Padraic Caulfield, Ray McMonagle, Dolly Murphy and Julie Sammiller, was set up to monitor and attend to the ongoing upkeep and maintenance of the KCC as an operational facility and building.

Due to Covid-19 the Centre was closed for large periods of time during the last 12 months. We did have limited access to the Gym, Business centre, playground and hair /beauty shop during this time. We received a grant to bring the Centre in line with Covid guideline in terms of hand sanitation stations, additional protocols on signing-in, new cleaning regime and contract tracing.

We upgraded the 1st floor Gallery by adding additional storage areas to accommodate new facilities purchased through a Youth facility grant and storage areas for our keep fit equipment. We also provided additional sound proofing to the business centre.

We applied for a new grant for the installation of a passenger lift, this grant was approved, and the lift was ordered through a competitive tending process.

During this period our CE workers continued with the upkeep of the external grounds to the centre.

Renewable Energy Programme

Our Renewable Energy sub-committee has continued to work on the development of solar energy projects. Solar PV generates clean electricity in daylight and panels can be installed on rooftops or directly on the ground using mounting structures. The KBCDA projects are ground mounted and if realised, will provide an income stream to the association by selling green electricity to the national grid.

Renewable energy projects of this nature take a number of years to develop and are contingent upon various external factors such as planning permission, grid connection access and financial competitiveness.

We have secured planning permission for 2 projects and have submitted planning applications to Wexford County Council for 2 further projects. All 4 projects have applied for grid connection capacity and are included in the current batch process by ESB Networks. This means they shall receive offers to connect to the Distribution System later this year which is a key step in enabling the projects to progress.

Renewable Energy projects are supported through a competitive auction process where projects bid for financial support. The most cost effective projects requiring the lowest levels of support are determined through the auction process and offered a price support contract. Unfortunately like any competition there has to be losers, so some fully developed projects will not be successful. Therefore it is important to bring forward projects that can be competitive with similar projects around the country. The scheme is called the Renewable Energy Support Scheme (RESS) and it is hoped all 4 KBCDA projects will be eligible to participate in the next auction which is scheduled for August 2022. Should some of our projects be successful in the RESS auction there will be a significant body of work to arrange the finance required to build the projects. Following the financing process, construction is expected to take approximately 12 months and the projects have an operational life of circa 30 years.

Fundraising

The voluntary contribution scheme ended officially in April 2016 but a number of members are still paying their monthly contributions or have transferred them into gym membership. Members of KBCDA are extremely grateful to all those that continue to contribute by either method.

Since the 'Strictly' dancing event, reported at the last AGM, further fundraising efforts have concentrated on raising funds for the local playground. Additional funds have been raised through seeking grant aid, with success in both last year's Town and Village Renewal Scheme and the more recent LEADER funding call for Youth Facilities. Fundraising events have not been prioritised due to Covid restrictions and the impact of unemployment the pandemic has had. Grant application for a lift installation within the building was successful. This will provide access for those less mobile and improve the functions of the building. The success of this grant was aided by the achievements created in the Youth Facilities Grant.

Playground Committee



The playground has stayed open when possible during the pandemic and the committee are delighted to see that parents and childrens have actively made use of the space and the vast majority have done so safely. We would ask that all those using the facility continue to use the provided hand sanitising equipment and to also ensure that they do not leave rubbish behind. We note that unfortunately, the facility is not appropriate for teenagers and we would ask parents to ensure that only those of an appropriate age are using the playground.

Community Men's Shed

The Men's Shed group has been put on hold during the pandemic and hopes to resume meetings and activities again when safe to do – watch this space !

Ballyfad Hall

Progress continues on the development of a new community hall in Ballyfad. The work, which commenced with site clearance in November 2017, is being advanced under the direction of the Ballyfad Community Hall Committee consisting of Pat O'Connor, Myles Carroll, Mary D'arcy, Pat Cullen, Bernadette Cullen, Philomena O'Toole, Gordon Tutty, Lilly Boland, Tom Ford, Fr. Browne PP, The committee has obtained LEADER funding to help complete the internal fixtures, fittings and furnishings with an expected completion date of summer 2021. The committee had completed a local community survey before the project started which set out the need for a modern hall with good facilities for groups to enhance and improve their talents and skills. The team are looking forward to supporting everyone who wishes to use the facilities in the Ballyfad New Hall and fulfilling their wish to develop the local community.

Ballythomas Community Field

Ballythomas Community Field continues to improve in terms of usage and drainage is improving year on year. Yogalates classes were held on Friday mornings. The children from Ballythomas school enjoy games and PE in the field. The Gap Arts Festival screened an outdoor film in August, which was very well attended. Annual running costs include public liability insurance and grass cutting. The boundary fence will need significant maintenance in the near future. Many thanks to Paddy O'Toole for all his hard work around the Field and to Brigid Nolan also.

Sustainable Energy Community

At the end of 2019, this group had completed massive quantitation work around what our area's energy usage and areas for improvement / reduction of energy use are (Energy Master Plan). Coming into 2020, we had a simple plan: An area wide project- Highly visible murals geared to 3 main objectives:

1. Continue Awareness Raising in broadest possible area of Sustainability: Biodiversity preservation and revival; Carbon Footprint reduction; Household level actions making a difference
2. Assure Community-wide inclusion
3. Focus on what households in each community can do

The murals are now in place. The standards outlining our current carbon usage is to be done asap. Alongside this work, our Solar Farm initiatives gained momentum with four locations at Glenogue, Coolnagloose, Barnlands and Graigue Beg at various stage of planning including application for Grid capacity.

Completed feasibility study for PV Panels for Community Centre. Awaiting loan approval of balance from Bank and confirmation of 5K grant from Arklow Bank Wind farm prior to commencement. As an element of the links between SEC and other groups in the area, there was a very well-attended biodiversity talk and walk early in the summer. Over 30 people attended this outdoor event which maintained the appropriate Covid guidelines in place at the time. Our resident ecologist, Deborah Darcy pointed out the various ecosystems in the village and along the forest paths. Very positive feedback from attendees. Issued Quarterly SEC newsletter to all community via email to bring awareness to the wider population of region.

Representations

Contact has been maintained with Council staff, local Councillors, TDs, Senators, WLD, Wexford Public Participation Network, the Gorey District Tidy Towns network, Coillte, ESBI, the Raheenleagh Windfarm Fund and the Department of the Environment, among others. This has been done by way of meetings and attendances at seminars, public meeting and consultations.

Thanks to committee members Michael D'Arcy, and Councillors Donohoe, Hegarty and Ó Súilleabháin for their work and support.

Public Participation Network(PPN)

The Wexford Community Forum has been replaced by the new format PPN. The Development Association is a registered member and urges other community bodies to do the same. Peter O'Connor is an elected PPN Community and Voluntary representative on the Wexford County Council's Local Community Development Committee (LCDC) and Karen Finigan is a Community & Voluntary Representative on the Environment & Climate Change SPC.

**KILANERIN BALLYFAD COMMUNITY DEVELOPMENT ASSOCIATION
CLG,
*COMHARCHUMANN FORBARTHA COILL AN IARAINN BAILE FADA***

NOTICE OF ANNUAL GENERAL MEETING

Community Centre, Kilanerin (KCC) Meeting Room

6th September 2021

AGENDA

1. Minutes of last AGM
2. Treasurers Report
3. Annual Report
4. Vaccination Centre, HSE
5. Sustainable Energy
6. Community renewable energy scheme
7. Election of Committee Members
8. AOB

**KILANERIN BALLYFAD COMMUNITY DEVELOPMENT ASSOCIATION
COMHARCHUMANN FORBARTHA COILL AN IARAINN BAILE FADA**

NOMINATION FORM

BALLYTHOMAS / ANNAGH AREA

Nominee: _____

Proposer: _____ **Seconded:** _____

BALLYFAD AREA VACANCY

Nominee: _____

Proposed by: _____ **Seconded by** _____

KILANERIN AREA VACANCIES

Nominee: _____

Proposed by _____ **Seconded by** _____

Nominee: _____

Proposed by _____ **Seconded by** _____

**NOMINATION FORMS TO BE RETURNED TO DEIRDRE SHERRIFF,
SECRETARY KBCDA,
c/o COMMUNITY OFFICE, KILANERIN by 5pm on the 6TH September 2021**