

**KILANERIN-BALLYFAD COMMUNITY DEVELOPMENT
ASSOCIATION**
*COMHARCHUMANN FORBARTHA COILL AN IARAINN-
BAILE FADA*

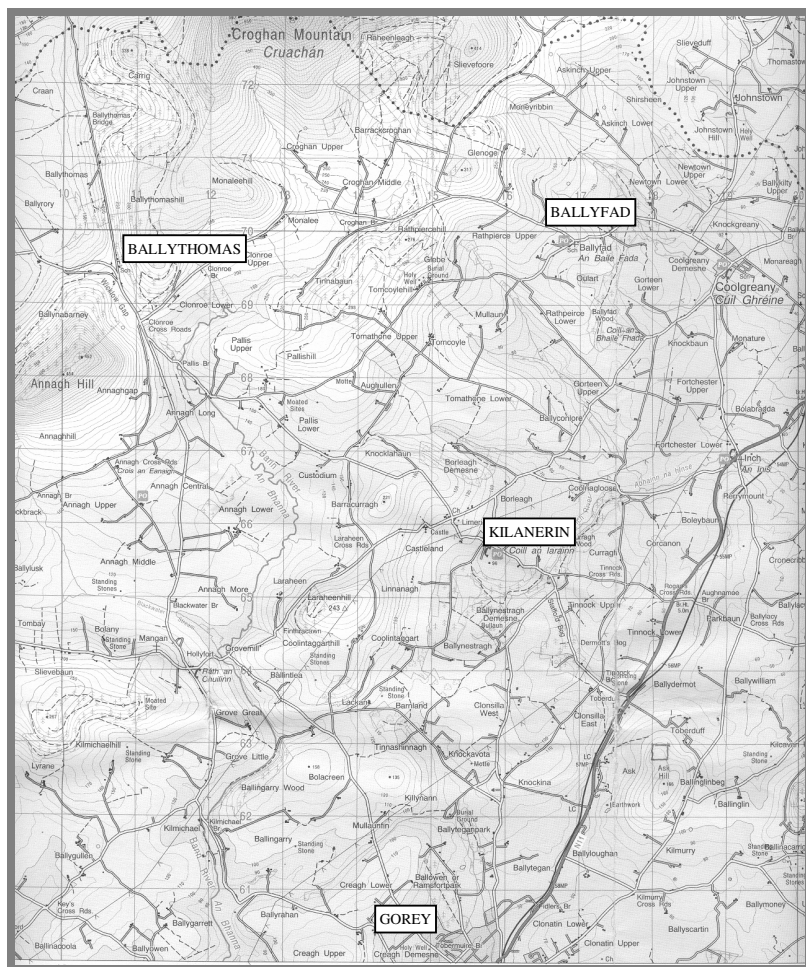


KILNANERIN-BALLYFAD-BALLYTHOMAS-ANNAGH-HOLLYFORT



- **INITIAL PUBLIC MEETING**
 - **CONSTITUTION**
- **COMMUNITY SURVEY FORM**
- **RESULTS OF COMMUNITY SURVEY**
- **COMMUNITY DEVELOPMENT PLAN**
 - **FEASIBILITY STUDY**
- **VOLUNTARY CONTRIBUTION SCHEME**
 - **ANNUAL REPORT 2004**

INITIAL PUBLIC MEETING



ESTABLISHMENT OF COMMUNITY DEVELOPMENT COMMITTEE KILANERIN-BALLYFAD-BALLYTHOMAS

COMMUNITY DEVELOPMENT FORUM

A recent meeting of the Gorey branch of the Wexford Community Development Forum was held at Kilanerin Hall and the large attendance was told of how other communities have tackled community development issues. Speakers from Wexford County Council and WORD outlined the financial and other supports available from organization such as FAS, The National Lottery and the Department of the Environment.

MEETING

Arising out of this meeting a further meeting will be held at **8:30 pm on Tuesday the 2nd March** in Kilanerin Hall to form a Community Development Committee for the Kilanerin-Ballyfad-Ballythomas area. This meeting is open to the general public and will also involve representatives from organisations within the parish. An initial objective of this committee will be to draw up a development plan for the area which will cater for the needs of all sectors of the community for the next 5 – 10 years.

Some of the topics that might be considered for inclusion in such a plan could be:

Water & sewerage requirements	Educational & training opportunities
Sheltered housing plan	Information Centre and communications (newsletter)
Telephone lines, broadband scheme	Arts & Crafts facilities
Amenity improvement plan	Development of Villages
Economic Development & Industry	Improvements of public spaces
Development of tourism projects	Tidy Towns, recycling
Provision of Parks, Walks and Woodlands	Chjldcare facilities
Public Transport	Youth facilities
Annual Events	Facilities for elderly, meals on wheels
Farming opportunities, markets, training	Enterprise units
Car Parking	Roads and footpath improvements
Safety & Security	Public Lighting and street furniture
Removal of dereliction	Community centre/sports halls, meeting rooms
Adoption by Planning Authority of Local Area Plan	Music, Drama facilities
Heritage, Folklore and History Projects	Environmental and Wildlife Projects

SETTING

The community is centred on the parish of Kilanerin which contains the half parish of Ballyfad, and is located approximately 5 miles north of Gorey and just west of the N11. It covers an area of approximately 50 sq km with a population of around 1250 people. The landscape consists of hills and wooded valleys with Croghan Mountain overlooking the entire area. Main occupations are farming, locally based industries and services, and an increasing number of residents who commute daily to the Dublin area.

POPULATION

The population is dispersed throughout the area with local centres at Kilanerin Village, Ballyfad Village, Ballythomas and Annagh. Gorey has served as a market town for the area for generations and other neighbouring communities are Coolgreany, Inch, Castletown, Tara Hill, The Rock, Hollyfort and Monaseed.

HISTORY

The area has a long history with settlements recorded from the Iron & Bronze Ages and was part of Kavanagh and Kinsella territory prior to the coming of the Normans in the 11th century. Subsequent migrants included English, Scottish and Welsh settlers in the 16th and 17th centuries and estate workers in the 18th and 19th century. In recent years with improved travel access and the national economic boom there has been an increase in residents coming from Dublin and other areas.

RECENT CHANGES

In the past there has been significant emigration for economic reasons but in recent years the population of the area has been increasing and is expected to continue doing so for the foreseeable future. Changes in the community and environment will accompany this increase in population and housing but also bring an opportunity to develop facilities catering for all aspects of community life.

INFRASTRUCTURE

The village of Kilanerin is fortunate to have a recently upgraded water and sewerage scheme. The proposed Gorey bypass and the upgrading of the N11 with a major junction at Tinnock will commence in 2005. Existing and proposed developments at Kilanerin village will see a further increase in the population of the area which is likely to be added to by recent changes in planning requirements for rural housing.

FACILITIES

Kilanerin parish contains churches at Kilanerin and Ballyfad and National schools at Kilanerin, Ballyfad and Ballythomas. There are existing community halls at Kilanerin and Ballyfad and the community field at Kilanerin caters for football and hurling. There are a number of active clubs and societies and the area has a strong tradition of community involvement and support for voluntary activities. Current activities include an annual talent competition and weekly events such as badminton and whist. The yearly patron at Limbrick cemetery sees the reunion of extended families with people returning for the day from outside the area.

TYPICAL STAGES IN DEVELOPING A COMMUNITY PLAN.

- **Community Consultation & Assessment of Needs**
 - **Formation of Committee and sub-Committees**
 - **Research of Projects and funding requirements**
- **Discussions with Partners and possible sources of funding.**
 - **Selection of Projects**
- **Preparation and Production of Draft Plan**
 - **Review of Plan by Community**
- **Adoption of Plan (with any amendments)**
 - **Implementation**
 - **Monitoring**
 - **Review**

**THIS IS AN OPPORTUNITY FOR YOU TO HAVE A SAY IN HOW
YOUR COMMUNITY DEVELOPS IN THE FUTURE SO PLEASE
COME ALONG AND CONTRIBUTE.**

CONSTITUTION

Constitution of Kilanerin-Ballyfad-Ballythomas Community Development Association

The Association

The name of the Association shall be "**Kilanerin-Ballyfad Community Development Association**", hereafter called The Association.

Aims

1. To provide an Association in which all residents of the community, in co-operation with existing local voluntary, sporting and cultural organisations, can meet together, make plans, develop policies and provide facilities for the benefit of all sectors of the community.
2. To carry out the business of the Association in a manner which is open, transparent and accountable to all residents of the community and for the common good.
3. To sustain and continue the traditions of community spirit, good neighbourliness, voluntary effort and self-reliance.

Objectives

4. To assess the needs of the community, draw up a draft Community Development Plan and present it to the community at a General Meeting for discussion and approval.
5. To implement the approved Community Development Plan with any amendments, in co-operation with existing local voluntary, sporting and cultural organisations.
6. To monitor and maintain projects carried out as part of the Community Development Plan.
7. To review the Community Development Plan on an ongoing basis.
8. To raise funds, obtain grants, make borrowings and acquire property for the execution of projects outlined in the Community Development Plan as approved by a General Meeting of the Association. Any assets acquired will be vested in the Association for the benefit of all the community.
9. To make representations, as it sees fit, on behalf of the community, to Wexford County Council, Wexford County Development Board and other relevant state and local agencies on common issues that affect the local community.

Membership

10. Membership of the Association is open to residents of the parish of Kilanerin-Ballyfad and of the townlands shown on the attached map. Members of any group which fulfils the Association's requirements may apply for membership of the Association.
11. An A.G.M. open to all members will be held in January of each year. The committee shall circulate an agenda, annual report and detailed financial report at least 14 days in advance of the AGM.

12. A Special General Meeting of the Association can be called at any time by a motion signed by more than 50% of the members. At least 14 days notice of the date of the AGM or any General meeting must be given.
13. No member, committee member or officer will receive payment for work done on behalf of the committee. Out-of-pocket expenses will be reimbursed.
14. A committee shall be elected annually at the A.G.M. by the membership. Any member can stand for election to the committee if nominated by 2 members. In the event that there are more than the required number of nominations to the committee there will be an election by ballot.

Committee

15. The Committee shall ensure that it contains representatives of all community organisations who wish to be affiliated and that all parts of the community are adequately represented.
16. The Committee shall consist of at least 10 and not more than 20 members, including officers. The Committee has the power to co-opt new members in line with 15 above.
17. The Committee will elect the following officers:
 - (a) Chairperson
 - (b) Vice Chairperson
 - (c) Secretary
 - (d) Treasurer or Joint Treasurers
 - (e) Public Relations Officer.
18. The Committee shall meet regularly but not less than 9 times a year. Committee meetings shall be held at different locations in the community on a rotating basis.
19. The Chairperson, or in his/her absence the Vice-Chairperson, shall act as Chairperson for the duration of the meeting, provided a quorum has been reached. In the absence of the Chair or Vice-Chair, an Acting Chair may be appointed for the duration of that meeting only and provided that a quorum exists.
20. A quorum, for the purpose of any properly convened meeting of the Association, shall be 50% of the committee members plus one.
21. The Minutes shall be kept by the Secretary, who shall enter therein a record of all proceedings and resolutions. Copies of the minutes shall be circulated to the members of the committee as soon as possible after the meeting and approved at the next meeting.

Amendment of the Constitution

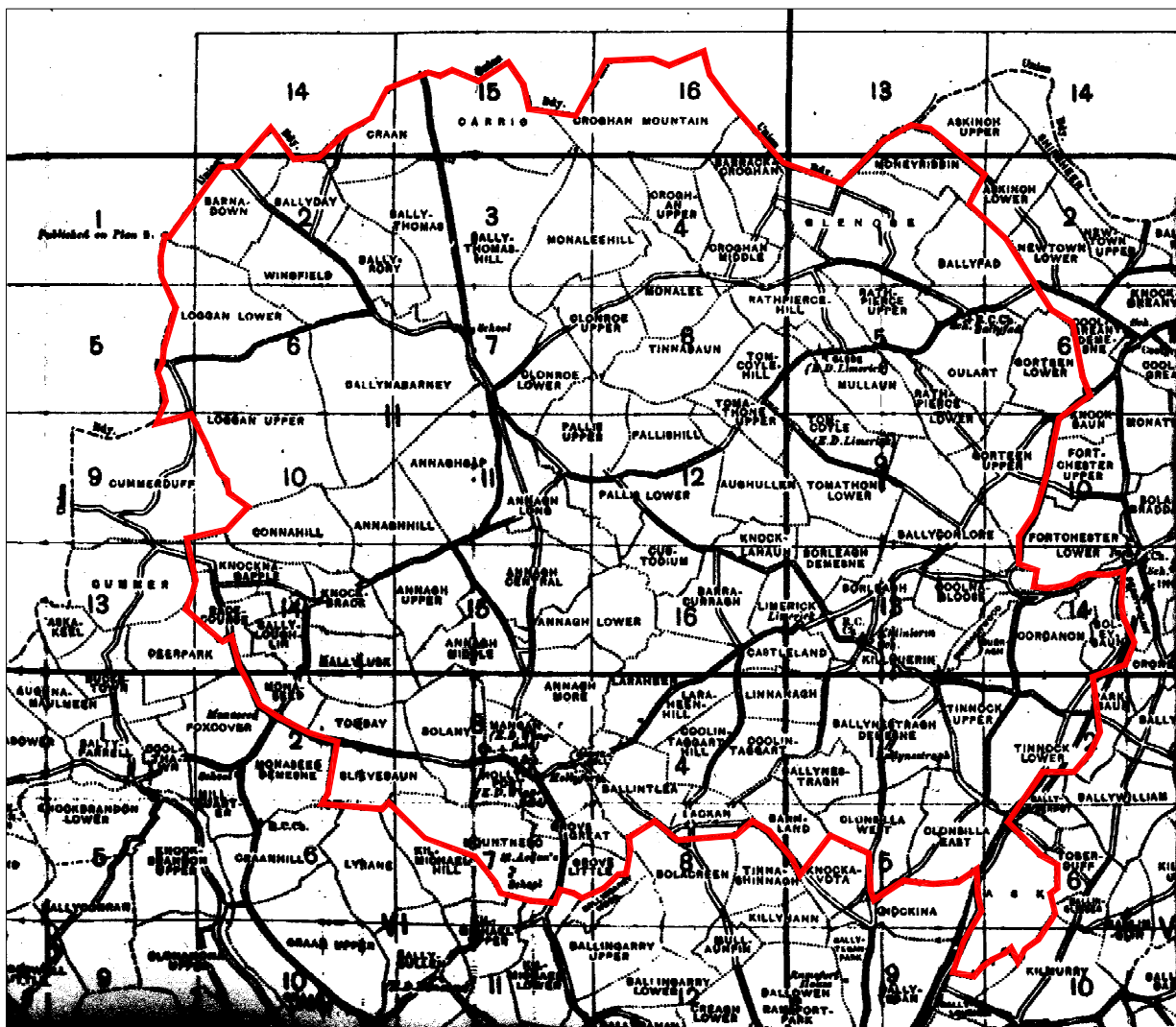
22. Any item of this constitution can only be changed by two-thirds majority vote at an Annual or Special General Meeting of which no less than fourteen days notice has been given.

Dissolution

23. The association is a not-for-profit, voluntary organisation. In the event of a dissolution of the association any financial surplus or assets after the discharge of liabilities will be disposed of for the benefit of the community as decided by an Annual or Special General Meeting of the Association.

Constitution Adopted _____ Signed _____ (Chairman)

Signed _____ (Secretary)



COMMUNITY SURVEY FORM

**KILANERIN-BALLYFAD COMMUNITY
DEVELOPMENT ASSOCIATION**

*COMHARCHUMANN FORBARTHA COILL AN
IARAINN- BAILE FADA*

COMMUNITY NEEDS SURVEY

MAY 2004

❖ KILANERIN-BALLYFAD COMMUNITY DEVELOPMENT ASSOCIATION

The Kilanerin-Ballyfad Community Development Association was established arising out of a very well attended public meeting in Kilanerin Hall on the 2nd March 2004. The committee of the Association is representative of voluntary groups and associations within the parish and of the different areas within the parish. A copy of the Association's Constitution is included at the end of this document.

❖ OBJECTIVES

The objective of the Association is to establish what the needs and expectations of the community are and how people would like to see the Kilanerin-Ballyfad area develop over the next 5 – 10 years. It is the aim of the committee to develop facilities and projects in line with these needs and expectations for the benefit of all sectors of the community. This work will be carried out in co-operation with existing local voluntary, sporting and cultural organisations.

❖ THE COMMITTEE

The Committee elected at the initial public meeting consists of the following:

Chairperson:	Seamus Hughes, Tinnock Upper
Vice-Chairperson:	Peter O' Connor, Kilanerin
Secretary:	Margaret Jones, Pallis Lower
Joint Treasurer:	Lilly Boland, Pallis Lower
Joint Treasurer:	Noel Murphy, Kilanerin
P.R.O.:	Mary Darcy, Rathpierce Upper
Committee:	John Bardon, Borleagh
	Michael Darcy, Annagh Lower
	Francis Fanning, Ahullen
	Liam Fanning, Clonroe
	Donal Hayden, Clonroe
	Paddy Hughes, Annaghmore
	Nancy Kavanagh, Coolintaggart
	Patricia Nolan, Barnland

There will be an Annual General Meeting each year at which the committee will present itself for re-election.

❖ YOUTH MEMBERS

In addition to the above two additional members, Anthony O' Donohoe and Edmund Sheridan, have been co-opted to represent the youth of the community. Further members may be co-opted in the future in order to ensure that all sectors of the community are adequately represented.

❖ WORK TO DATE

As part of its initial work the Association has had meetings and consultations with parish groups and organisations. It has raised short-term funding in order to commence its work and is currently considering long-term fund-raising options. The rules and scope of the Association have been compiled into an agreed Constitution.

The Committee has also had preliminary discussions with funding agencies such as the National Lottery, WORD and Wexford County Council. In order to obtain funds from these agencies it is necessary to draw up a comprehensive development plan which reflects the present and future needs of the community.

❖ THE COMMUNITY DEVELOPMENT PLAN

A draft community development plan will be drawn up based on the results of a survey of all residents, consultation with existing groups and organisations, and an assessment of community needs and priorities.

❖ FEASIBILITY STUDY AND CONSULTATION

Once the results of the survey have been assessed a detailed feasibility study and costing of the projects considered most important by the community will be carried out. A draft community development plan will then be presented to the residents and associated groups and organisations for discussion and approval.

❖ IMPLEMENTATION

After the plan, with any changes, has been agreed by the community the committee will then proceed to implement the projects within the plan in the order of priority agreed. This will take place on a phased basis over a period of 5 – 10 years and, in addition to whatever public funding is obtained, will require significant local voluntary effort, fundraising and support.

❖ THIS SURVEY

As part of the next step in achieving these aims the Committee would like to hear what **you** consider is most important in any future development of the community. The following questionnaire lists a wide range of ideas and proposals which have been suggested by groups and individuals so far. Most of the items listed are probably desirable but it would not be realistic to hope to achieve all of them, certainly not in the short-term.

We therefore would like you to consider carefully the proposals listed and to tell us what you think is the most important, next important, least important and so on by ticking the relevant box opposite each item.

❖ THE POTENTIAL COST

You may think that some of the items listed are unrealistic in terms of the potential cost but please do not let that influence what projects and ideas you think are most important at this stage. All projects will be fully costed and their financial feasibility assessed before they proceed to the next stage.

❖ ADD YOUR OWN IDEAS

In addition if you have any ideas, proposals or suggestions of your own that are not included here your invited to write them on the blank sheet after the questionnaire (use additional sheets and drawings if necessary).

❖ SURVEY IS VOLUNTARY

Completion of the survey is entirely voluntary and you do not have to answer any or all questions if you wish. All replies will be treated in strict confidence. It may be that you do not consider yourself part of this community or you may not wish to participate in this process. If so we respect your decision and thank you for reading this far.

❖ RESULTS

The results of the survey will be compiled by an independent consultant and used as the basis for the draft community development plan. A summary of the survey results will be published with the plan.

TO BE COMPLETED BY EACH ADULT. NAME(OPTIONAL) _____		MOST IMPOR- -TANT	VERY IMPOR- -TANT	IMPOR- TANT	LEAST IMPOR- -TANT	NOT REQU- -RED
PLEASE TICK THE BOX TO RATE EACH ITEM IN ORDER OF IMPORTANCE						
COMMUNITY FACILITIES AND INFRASTRUCTURE						
1	Construct a modern Community Hall for concerts, plays, social functions, together with Parish Office, meeting rooms and catering facilities.					
2	Construct a modern indoor Sports Facility with indoor pitch and courts, gym, squash/handball/racquetball courts, snooker room, hurling wall.					
3	Provide Sheltered Housing and Meeting Rooms for the Elderly.					
4	Construct a Swimming Pool					
5	Refurbish existing Kilanerin Hall					
6	Develop Local Heritage Centre and Rural Museum					
7	Develop Nature & Environment Centre					
8	Develop Woodland Park, Ponds and Walks					
9	Provide IT/Computer Centre					
10	Provide Drop-in Centre for Youth					
11	Provide Local Medical Centre					
12	Improve Roads and Road/Speed Limit Signs					
13	Provision of Community Housing					
14	Care for Elderly, Visitation, Meals					
15	Provision of Business Park and Enterprise Units					
16	Adoption by Planning Authority of Local Area Plan					
17	Development of Tourism Facilities					
18	Provision of Public Transport to Gorey					
19	Development of local markets for agricultural & horticultural produce					
20	Neighbourhood Watch & Local Safety Measures					
SOCIAL & RECREATIONAL PROJECTS						
21	Youth Club for 5-12 years					
22	Youth Club for 13-18 years					
23	Drama Society					
24	Art Classes and groups					
25	Crafts Classes and Groups					
26	Music Classes and Groups					
27	History, Heritage & Folklore Projects					
28	Annual Drama Festival					
29	Concerts					
30	Tidy Villages Groups					
31	Public Talks and Lectures					
32	Annual Summer Festival					
33	Active Retirement Group					
34	Parish Magazine					
35	Night Classes and Training Courses					

	QUESTIONS 36-43 FOR BALLYFAD AREA RESIDENTS ONLY	MOST IMPOR- TANT	VERY IMPOR- TANT	IMPORT- -ANT	LEAST IMPOR- TANT	NOT REQUI- RED
36	Refurbish existing Community Hall In Ballyfad					
37	Community broadband scheme Ballyfad					
38	Group Water Scheme Ballyfad					
39	Public Toilet Ballyfad					
40	Improve and extend Footpaths Ballyfad					
41	Creche & afterschool childcare Facilities in Ballyfad					
42	Improve and extend Street Lighting Ballyfad, Traffic Calming					
43	Provision of Car parking for School & Church in Ballyfad					
	QUESTIONS 44-47 FOR BALLYTHOMAS/ANNAGH RESIDENTS ONLY					
44	Creche & afterschool childcare Facilities in Ballythomas/Annagh					
45	Local Hall & Meeting Room in Ballythomas/Annagh					
46	Develop School/Community Field in Ballythomas/Annagh					
47	Provide Group water scheme					
	QUESTIONS 48-53 FOR KILANERIN AREA RESIDENTS ONLY					
48	Creche & afterschool childcare Facilities in Kilanerin					
49	Community broadband scheme Kilanerin					
50	Provision of Car parking for School & Church in Kilanerin					
51	Public Toilet Kilanerin					
52	Improve and extend Street lighting Kilanerin, Traffic Calming					
53	Improve and extend Footpaths Kilanerin					
	QUESTIONS 54-71 REFER TO UNDER 18'S ONLY PLEASE COMPLETE WITH YOUR CHILDREN					
54	Gym					
55	Swimming Pool					
55	Provision of Café/Diner					
56	Snooker/Pool Room					
57	Mountain Bike/Scrambler Track					
58	Rock Climbing					
59	Local Cinema					
60	Youth Disco					
61	Outings and Trips					
62	Music classes					
63	Drama Classes					
64	Art Classes					
65	Basketball					
66	Volleyball					
67	Chess					
68	Badminton					
69	Handball/Squash/Racquetball					
70	Water Sports					
71	Athletics					

Please insert the numbers of what you consider to be the 5 most important items from the previous two pages in the following boxes:

--	--	--	--	--

How many miles do you travel to work ? < 3 ____ <10 ____ <30 ____ Other ____

Do you support the aims and objectives of the Kilanerin-Ballyfad Community Development Association? Yes ____ No ____

Would you like to receive further information and newsletter ? Yes ____ No ____

Do you have any trade, skill or profession that you would be willing to make available to community projects on a voluntary basis ? Yes ____ No ____

If 'Yes' please give details, availability and contact details: _____

If you have any suggestions for fund-raising events please give details: _____

HOUSEHOLD INFORMATION (TO BE COMPLETED ONLY ONCE PER HOUSEHOLD)

Name (optional) _____ Townland _____

No of children under 5 years old in household Male ____ Female ____

No of primary school children in household Male ____ Female ____

Children's primary school: Kilanerin ↕ Ballyfad ↕ Ballythomas ↕ Other ____

No. of post-primary school children in household Male ____ Female ____

Children's post-primary school: Gorey ↕ Carnew ↕ Arklow ↕ Other ____

No. attending third-level education in household Male ____ Female ____

No. of adults under 65 in household Male ____ Female ____

No of adults over 65 in household Male ____ Female ____

Is there any household member with a physical disability? Yes ____ No ____

Is there any household member with special needs? Yes ____ No ____

Is there any elderly household member requiring special care ? Yes ____ No ____

Would a day-care centre/relief nursing scheme be of interest ? Yes ____ No ____

You may write in your own opinions, suggestions and comments here:
(Also include the views and ideas of children and youth, use additional sheets if necessary)

[illegible]

RESULTS OF COMMUNITY SURVEY



**KILANERIN-BALLYFAD COMMUNITY
DEVELOPMENT ASSOCIATION**

*COMHARCHUMANN FORBARTHA COILL AN
IARAINN- BAILE FADA*

COMMUNITY SURVEY RESULTS

November 2004

KILANERIN-BALLYFAD COMMUNITY DEVELOPMENT ASSOCIATION

The Kilanerin-Ballyfad Community Development Association was established arising out of a very well attended public meeting in Kilanerin Hall on the 2nd March 2004. The committee of the Association is representative of voluntary groups and associations within the parish and of the different areas within the parish.

OBJECTIVES

The objective of the Association is to establish what the needs and expectations of the community are and how people would like to see the Kilanerin-Ballyfad area develop over the next 5 – 10 years. It is the aim of the committee to develop facilities and projects in line with these needs and expectations for the benefit of all sectors of the community. This work will be carried out in co-operation with existing local voluntary, sporting and cultural organisations.

THE COMMITTEE

The Committee consists of the following:

Chairperson:	Seamus Hughes, Tinnock Upper
Vice-Chairperson:	Peter O' Connor, Kilanerin
Secretary:	Margaret Jones, Pallis Lower
Joint Treasurer:	Lilly Boland, Pallis Lower
Joint Treasurer:	Noel Murphy, Kilanerin
P.R.O.:	Mary Darcy, Rathpierce Upper
Committee:	John Bardon, Borleagh
	Michael Darcy, Annagh Lower
	Francis Fanning, Ahullen
	Liam Fanning, Clonroe
	Donal Hayden, Clonroe
	Carmel Hughes, Kilanerin
	Paddy Hughes, Annaghmore
	Nancy Kavanagh, Coolintaggart
	Patricia Nolan, Barnland
	Anthony O' Donohoe, Annagh
	Edmund Sheridan, Curragh

THE COMMUNITY DEVELOPMENT PLAN

A draft community development plan has been drawn up based on the results of a survey of all residents, consultation with existing groups and organisations, and an assessment of community needs and priorities. Outline costings of the projects in the plan have been made.

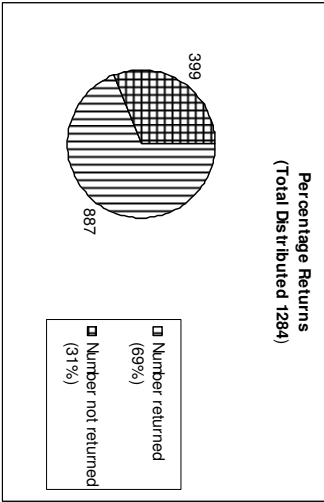
HOW THE SURVEY WAS CARRIED OUT

A database of all residents over 18 years of townlands within the community was compiled. A copy of the survey was distributed personally to each person on the database by members of the committee and the completed surveys were collected from them or returned to the collections boxes in Kilanerin, Ballyfad, Ballythomas, Annagh and Hollyfort. A total of 1284 surveys were distributed to approximately 600 households.

The results were then compiled on computer by members of the committee and the needs of the community prioritised. A copy of the results has also been sent to an independent consultant for analysis and comment.

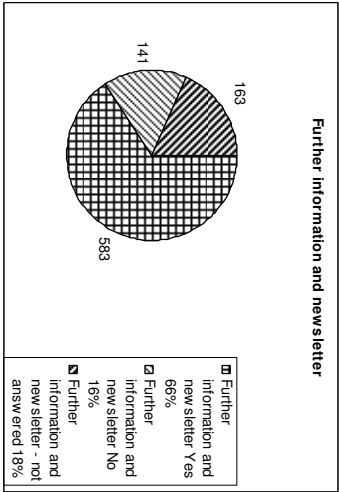
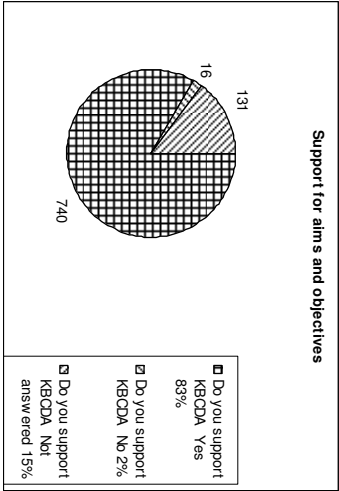
The results are summarised on the following pages.

SURVEY RETURNS AND SUPPORT

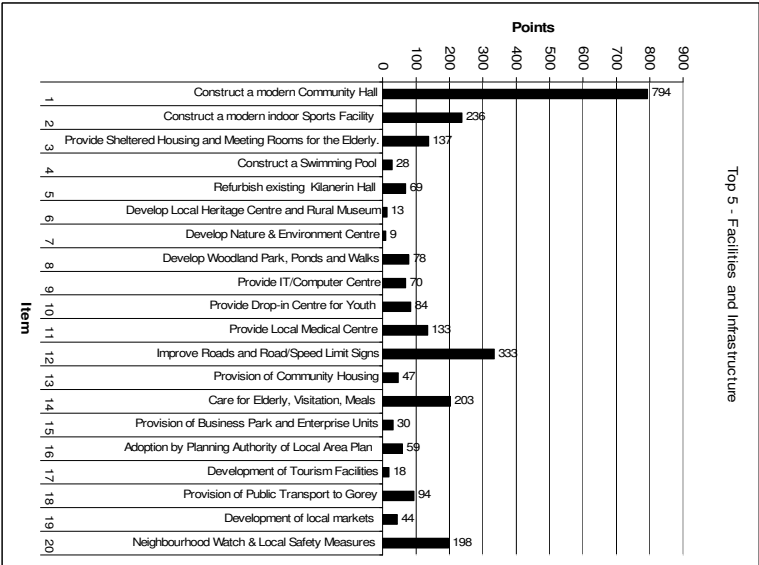
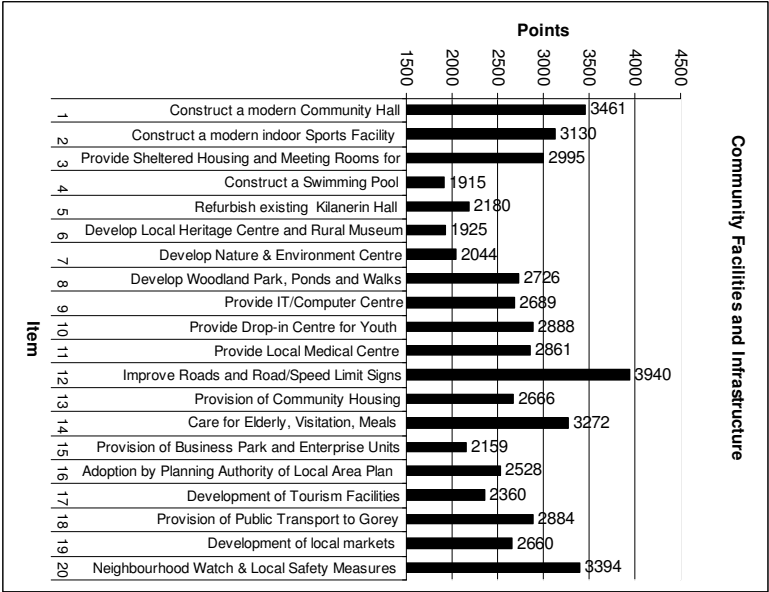


Of the total of 1284 surveys distributed, 885 were returned which is a 69% return rate and a good response for this type of survey.

Support for the aims and objectives of the Association is 83% positive and only 2% negative. 66% of respondents (585 people) were interested in receiving further information.



COMMUNITY FACILITIES AND INFRASTRUCTURE



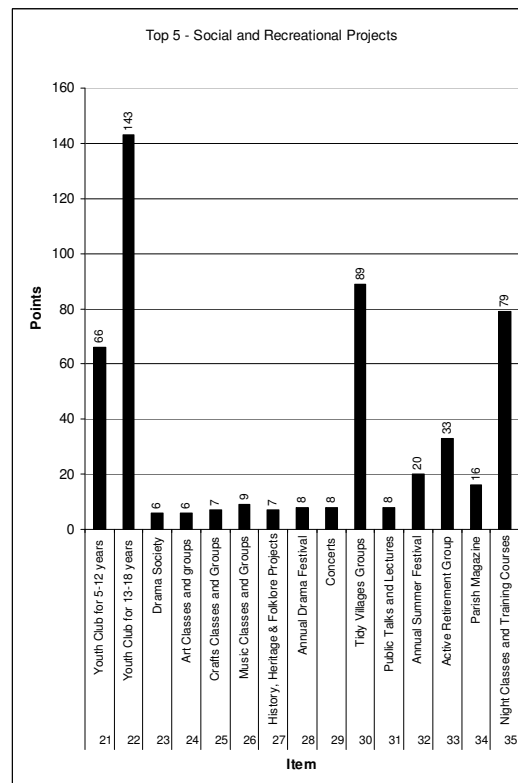
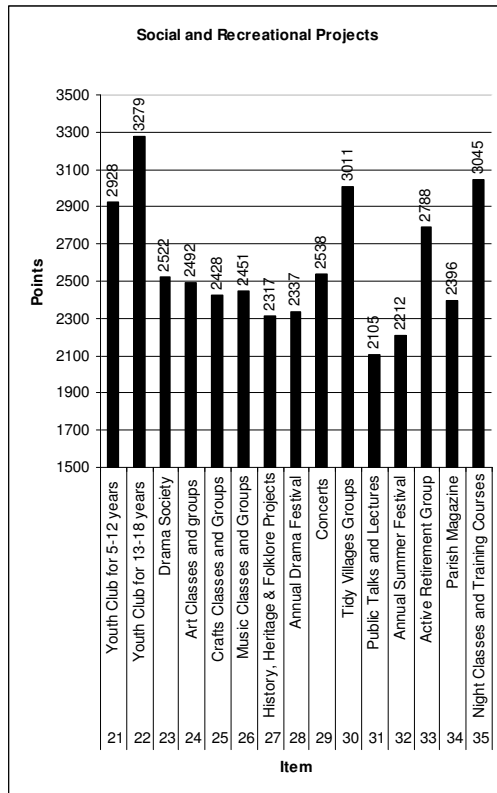
In each of the following sections there are two graphs. The graph on the left is based on what respondents considered most important, least important, etc and the graph on the right is based on the Top 5 needs. Both graphs should show similar results with the graph on the right giving a clearer idea of priorities.

The first section of the survey was on Community-wide facilities and infrastructure showed the following priorities:

- **Construction of a modern Community Hall**
- **Road improvements and general Safety/Security measures**
- **Construct a modern Indoor Sports Facility**
- **Sheltered Housing and care of the Elderly**

Provision of a local medical centre and public transport to Gorey also rated highly.

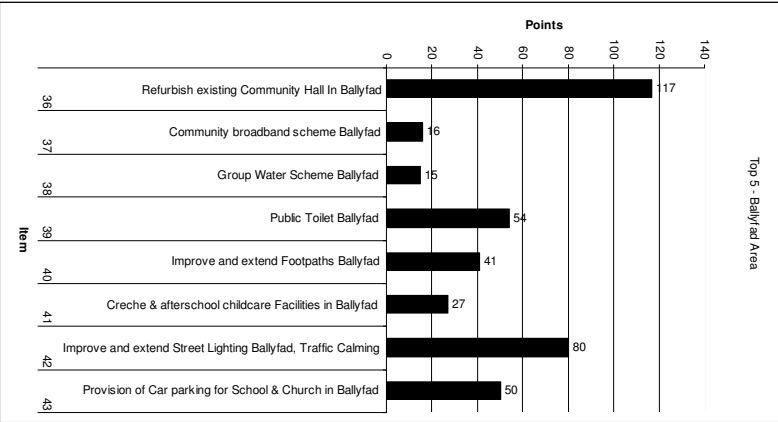
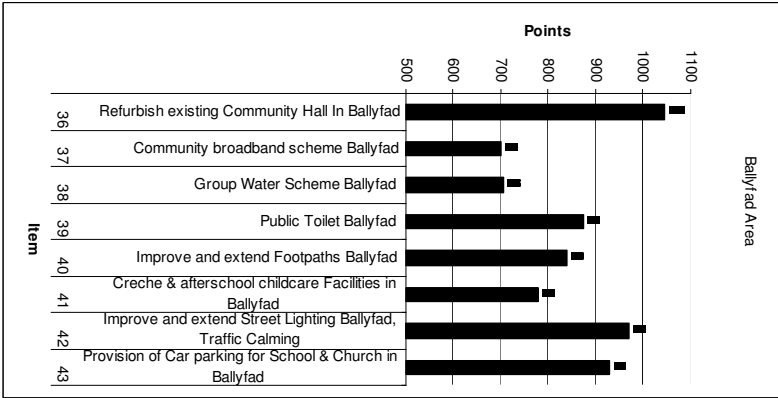
SOCIAL & RECREATIONAL PROJECTS



The section on Social and Recreational Projects showed the following priorities:

- **Youth Club**
- **Tidy Villages**
- **Night Classes and Courses**
- **Active Retirement Group**

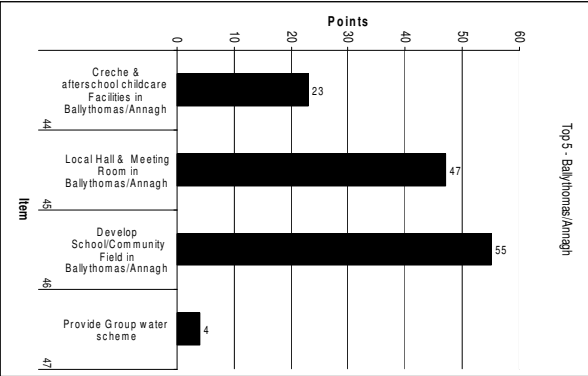
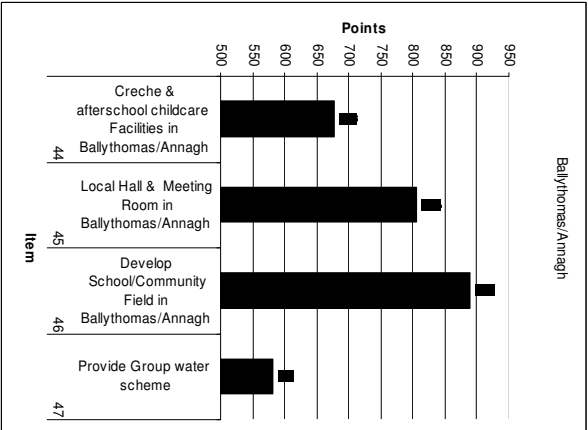
BALLYFAD AREA



The priorities in the Ballyfad area were:

- Refurbish existing hall
- Street lighting and traffic safety
- Car parking for school and church.

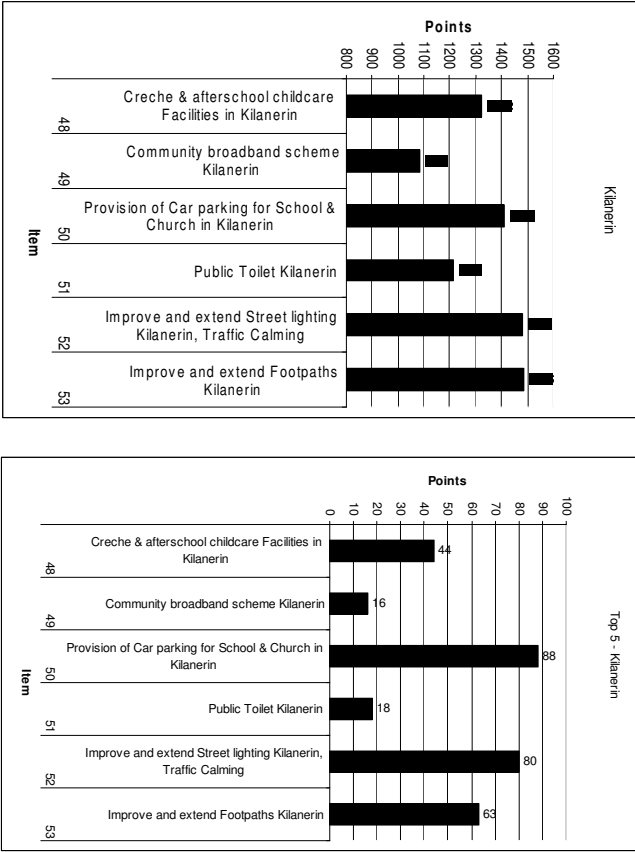
BALLYTHOMAS/ANNAGH



The priorities in the Ballythomas/Annagh area were:

- Provision of local hall/meeting room
- Develop Community Field.

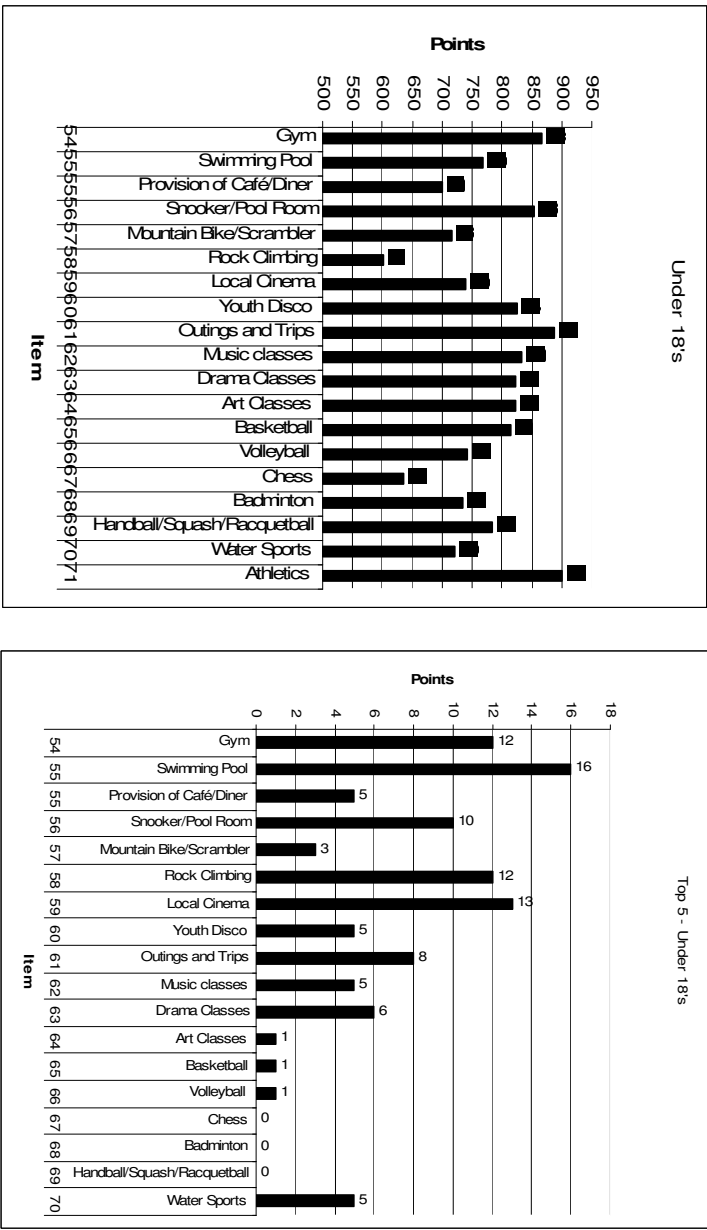
KILANERIN AREA



The priorities in the Kilanerin area were:

- Improve Street lighting and Traffic calming
- Improve and extend Footpaths
- Car Parking for School and Church

UNDER 18'S



The priorities of the youth of the area are:

- Swimming Pool
- Cinema
- Gym & Rock Climbing

HOUSEHOLD STATISTICS	Total
Number of male children under 5	81
Number of female children under 5	<u>82</u>
	163
Number of male primary school children in household	128
Number of female primary school children in household	<u>123</u>
	251
Number of male post-primary school children in household	110
Number of female post-primary children in household	<u>82</u>
	192
Number of males attending third-level in household	32
Number of females attending third-level in household	<u>37</u>
	69
Number of male adults under 65 in household	532
Number of female adults under 65 in household	490
Number of male adults over 65 in household	80
Number of female adults over 65 in household	<u>70</u>
	1172

SUMMARY

	Male	Female	Total	%
Under 5	81	82	163	9.7
Primary	128	123	251	14.9
Post-primary	110	82	192	11.4
Third-level	32	37	69	4.1
Under 65	532	490	1022	60.7
Over 65	<u>80</u>	<u>70</u>	150	8.9
	882	802	1684	

From the above graph a total of 1684 residents were included in the 69% who replied to the survey. When factored up to 100% this means that there are approximately 2440 residents currently in the community area. If increases in housing continue at the same rate as the last 7 years, the number of residents is likely to be around 4,000 by 2012.

Currently 60% per cent of residents work within 10 miles of home.

SPECIAL CARE QUESTIONS

Household members with a physical disability	23
Household members with special needs	14
Elderly household members requiring special care	17
Number interested in a day-care centre/relief nursing	112

WORK CARRIED OUT BY THE ASSOCIATION TO DATE

- ◆ The committee has met on 21 occasions at different locations in the community.
- ◆ Initial funding obtained from Parish Committee, Comoradh '98 and by private loans.
- ◆ Meetings have taken place with County Council officials and funding agencies.
- ◆ A grant of €6,900 has been obtained from WORD towards the community survey and feasibility study.
- ◆ Consultations and meetings held with parish bodies and organisations.
- ◆ Sub-committees formed dealing with community planning, fundraising, grants, etc.
- ◆ A survey of all households and local organisations has been completed.
- ◆ A local amenity grant of €1,000 has been received from Wexford County Council towards the Tidy Villages effort.
- ◆ Road improvement and road safety proposals for Kilanerin, Ballyfad and Ballythomas have been drawn up costing a total of €57,000.
- ◆ Grants for the above work have been secured from WORD and Wexford Co Co.
- ◆ Funding assistance has been given to Kilanerin-Ballyfad Youth Club, Hollyfort Church Restoration Fund and Gap Celtic.
- ◆ The amount of €5,000 has been committed to assist the site purchase for Ballythomas Community Hall.
- ◆ The Association will be making a significant contribution towards the provision of toilet facilities, new windows and painting of Ballyfad Hall.
- ◆ Applications have been made to other public-funding agencies.
- ◆ A successful fund raising race night was run in August which raised €13,000.
- ◆ Agreements in principle have been reached with the Parish Finance Committee and local landowners regarding possible sites for the community hall and sports centre.
- ◆ The Association has agreed to make a significant contribution towards the cost of Kilanerin church renovation work over the coming years.
- ◆ Submissions have been made to Wexford County Council on housing developments in Kilanerin village.
- ◆ Discussions have been held with developers regarding possible contributions to development of community facilities.
- ◆ A solicitor and accountant have been engaged and work is under way to incorporate the Association as a limited company.
- ◆ Charitable status is currently being applied for.
- ◆ Architects have been appointed to draw up outline plans for the sports centre and other community facilities.
- ◆ A draft plan is shown below with outline costing and timescales.
- ◆ A Public Meeting is scheduled for Nov. 26th in Kilanerin Hall to present the plan.
- ◆ It is proposed to have a voluntary community contribution scheme & draw to raise funds.

SKILLS AVAILABLE INCLUDE:

- Handy man?
- Degree in business and leisure mgt.
Knowledge of Recreation & sports facilities planning
- Digger driver
- I.T Skills- Typing
- Construction related projects
- General Help
- Photographer/Hurling coach?
- Mechanical skills, welding skills & prep guitar
- 2-3 hrs a week voluntary work
- I.T Teacher, (secretarial work) Full bus license
- Cooking and baking?
- Available Saturday afternoons to do arts and crafts classes, printmaking, and some other Organizational and
- Administrative skills general availability
- E.C.D.L
- Secretarial
- Carpentry
- Gardening, Stonework
- Care of elderly/ Learning disability
- Parish work
- Electrician.
- Help with building projects
- Banking and any general fundraising
- Gardening, painting, cleaning
- Organisational skills, ecological youth, religious enterprise
- Tiling and handy man
- Catering trade/Gov Requirements
- Economic and social Research/structure and content of any written proposal or funding application
- Painting, gardening, fencing
- Demonstrations and time
- Civil engineer
- Carpenter, maintenance work
- Gardening, child minding, book reading, arts and crafts
- Child care, care of elderly, visitation, meals etc
- Supervise youth clubs and outings Fundraiser
- Voice production, singing & public speaking, health care by nutrition
- Sea scout leader/ I.T professional
- Youth club leader
- Professional actress
- Accountancy
- Asa beiki master
- P.C literate
- Mechanical & electrical repairs R
- Sports training for youth
- 2 Hands a fairly steady head
- Help with I.T/ Computer
- Transport
- Graduate of the marketing institute, colour consultant and qualified nurse,
- Project management and computer skills,
- Secretarial
- Interior design consultant,
- Carpenter
- General help (manual)
- Will help with painting and decorating of new hall or will mind children of others with skills to offer.
- Electrician
- Trainee accountant
- Help out with building hall, car park etc if required
- Will help in any way I can.
- Accounting/ Finance/ Administration.
- Access to weekly newsletter, typing, use of computer, copy printed-availability limited.
- served on Wexford tourism council
- 33yrs in vet practice/public health
- Refrigeration engineer handy for DIY jobs
- willing to help committee or join future committee
- Secretarial skills willing to help on committees
- Drama Irish language help generally
- Children's drama, help with newsletter, children's trips, national school teacher
- teacher dealing with kids weekends only
- arts+ crafts classes groups. Photography+ design
- IT Skills
- Sports+ youth clubs coaching
- Machine Maintenance welding etc

A register of those willing to help has been compiled.

FUNDRAISING IDEAS INCLUDE:

- Local lotto(silver circle draw)
- Tickets, sponsored walks, musical evening in hall with door charge, “Ad mag” –Local businesses pay to have ad put in the magazine.
- Table quiz, Who wants to be a thousandaire, Fashion show, golf classic.
- Fashion show
- Dream auction
- Horse track
- Poker classic
- Weekly lotto, sponsored walk/cycle, race night.
- Silver circle or lotto
- Sponsored walk, sponsored childrens waterfight.
- Who wants to be a thousandaire
- Race night
- Sell a brick
- Race night
- Race night
- Who wants to be a thousandaire
- Field day, raffle, sponsored walk.
- Lotto
- Super drawx5 months €50 tickets-good prizes similar to Wexford GAA
- Table quiz
- Car raffle
- Bingo, lotto, race nights
- Monster bingo, marathon-10Km, Bric-Brac sale
- Poker classic, race nights, dances
- Charity walks, lotto, table quizzes
- Race night, table quizzes
- Table quiz
- Table quiz, Pub benefit night, sponsored walk.
- Bake sale.
- Nature walk, visit historical sites, craft fair and art exhibition.
- Pub quizzes, race night, fun runs, vintage runs, chest and leg waxing, bed pushes.
- Male leg waxing, parachute jumping.
- Celebrity auction, monster BBQ, sponsored walk, hill climb.
- Sponsored fun run, charity auction, develop own scratch card.
- “Who wants to be a thousandaire”
- Tractor pulling competition.
- Sponsored walk.
- Lotto,
- Dinner dance, pub quiz, sports events, race night
- No uniform days.
- Karaoke, race night, dance for over 50’s.
- Irish nights, card games, over 50’s dance.
- Croghan walk.
- “Who wants to be a thousandaire”.
- Footballers drag queen night.
- Market or stall selling, home produce, crafts, street party, worm charming.
- Monster raffle.
- Auction.
- Quiz nights.
- Bingo, bag packing.
- Race night
- Head shave, leg waxing, raffles, sponsored sports events Race night.
- Parachute jump, race night.
- Charity auction, sell parish land for building retain 1 house and raffle it.
- Sell house and raffle it.
- Parish dance.
- Charity hurling and football matches.
- Sports day and raffles.
- Auction.
- Children’s sports day.
- Bag packing in Tesco’s.
- Race nights, bike rides, Croghan walks.
- Monthly draw.
- Race night, football matches between men and woman.

- Voluntary labour 1 day per month or €50 per month.
- “Who wants to be a thousandaire”
- Take turns with GAA; Golf classics, race night, field evenings, “Who wants to be a thousandaire”.
- Monster Auction
- Golf classic, build house on parish land using local trade men and selling finished product.
- Open air concert in sports field.
- Thousandaire
- Barn Dance with BBQ
- Thousandaire
- Race nights, night at dogs, bag packing, sponsored walks
- Pub Quiz, bag packing, cake sales, sponsored disco
- Bag packing Fun run, race nights, bingo, community donations
- Fun run, race nights, field day
- Treasure trail
- Car boot sales, lotto bring n’ buy sales, local rallies
- Car boot sales, sponsored walks, cake sales, raffles, booksales
- Field day, trailers of firewood, auction of farm products& cake sales
- Auction
- Bag packing/ Wicklow way 3 day hike
- Table quiz
- Garden fetes/ car boot sale
- Annual fair/ sports day
- Sponsored litter clean up
- Tractor pulling competition
- Marque BBQ
- Race night/ dinner dance
- Monster bingo/ sports events
- Fundraising matches, table quizzes, community evenings.
- Fashion night
- Dog racing night in Enniscorthy greyhound track.
- Rock concert, barn dance, photographs taken.
- Buy a site build house and sell it.
- Sponsored walk, sponsored parachute jump.
- Race nights, black Tie ball I have organised about 8 so far all successful and if attended can make substantial sums
- Race night
- Sports day with disco/dinner after
- race night
- Lotto
- Draw/raffle
- race night
- bag packing
- Signed jersey raffle,
- friendly match
- table quiz
- mini triathlon
- sponsored walk
- cross country run
- race night
- Music nights
- adult Dancing
- exchanging used bottles and cans for money cuts down rubbish
- Sponsored run/walk
- closed draw
- pub quiz
- Weekly house to house collection
- big name concert large venue marquee
- Car Wash & Sponsored Disco
- Talent Competitions
- Sponsor a brick or slate for new hall
- Two for Raffles, Card Games, Lotto and bingo
- Leg waxing of football & hurling senior teams
- Fashion Show, Race Night, Car Boot Sale.
- MINI Marathon 3 Suggestions
- Silver Circle 4 Suggestions
- Two for a sponsored walk
- A Drama Play in hall

GENERAL COMMENTS RECEIVED INCLUDE:

- Recycling centre in Ballythomas/The Gap
- Speed ramps outside the schools
- Speed limit at Ballythomas school and for the safety of the children a railing erected on top of the wall in front of school
- A modern community hall and sports facility giving no preference to any one group, night classes and training courses and Speed limit at Ballythomas school and for the safety of the children a railing erected on top of the wall in front of school
- Recycling centre in Ballythomas/The Gap
- Kilanerin hall is too old to spend any more money on, questions 1&2 should be done as one project and if realized questions 54-71 should fall into place. If there was more tourist attractions there would be other benefits, employment, local financial gain etc. Ballythomas/The Gap needs a well constructed school/community field.
- Ref no's 1&2 Construct one hall to cater for both sport and social functions
- Community hall so both youth and adults could benefit, pool table in a prefab perhaps in the school field.
- Shop in Ballythomas area would be very beneficial, post box in this area would also be useful.
- Facilities are poor for young adults in area, would love to take part in organizing or taking part in outdoor activities.
- Its greatly appreciated working with Gorey Community School more in the future would be a rewarding relationship for all.
- With the development of the village there will be more pressure put on the school and under no circumstances should any school ground be lost.
- All projects must be able to stand on their own after initial investment. Opening for a market for farm fresh vegetables, jams, home made bread, cakes.
- Growing need for parent and toddler group in Kilanerin. This would be a social outlet for the parent taking care of a young family in the home and with so many young families in the area this would help them meet other parents with similar interests this group could move on through their growing children to be leaders on youth groups etc.
- Great for children to have a youth centre and swimming pool, they would have an interest in these things and it would keep them out of trouble. The crèche in Annagh has been a great success and is so handy and near. There is a lot of young children in the area now that will appreciate these facilities when they come in the future.
- The Ballythomas roads need three more street lights from the school to the Gap pub it would make it safer for young people and the elderly to get around, youth club needed.
- Area badly needs a Rural Transport Scheme as population has majority of O.A.Ps. Needs of youth in need of attention ie. Boys and Girls scramble track for quads and bikes.
- Most of the facilities required could easily be provided for by construction of an all purpose community hall.
- Like to see plenty of ramps for the disabled.
- The more facilities the better to boost peoples moral and lifestyle. There is a need for activities for both young and old and a meeting place for the local community, sports field indoor area including gym basketball etc. Ballythomas/Kilanerin has potential for walking and cycling routes. A local crèche would be ideal.
- Modern Community Centre combined with sports facility.
- Rebuild Kilanerin Hall at same site with sports facility which school kids could use at lunchtime, Museum and heritage centre in red stone houses at church. Park set up at church grounds. Improve Shopping centre at Ballyfad. Feature beside "Grotto", seating area and flowers. After school hours crèche.

- Public transport from Annagh, Ballyfad, Kilanerin to Gorey daily. Supermarket in Ballyfad.
- Good community spirit already, some facilities for young children to help them develop in a managed environment, elderly and disabled must be included on every level. Disco every week, more shops like in Gorey, youth club after school lift there and back home again.
- Bingo in local area, general tidy up of Ballyfad area, improvements made to shop and village houses. Craanford is a good example to follow.
- Sign posts to mark all townlands. Do up bridges with flowers and shrubs, park area, lighting down walkway to church, recycling bins.
- Repair Ballyfad road, History walks, Tourism. Farmer could bring cans across road at different to keep crossroads clean.
- Party, get together or festival with something for everyone would be a good place to start to build community spirit.
- Hall or community center built in Ballythomas.
- Something in place to develop the history of the area, provide more places for people to meet, and for children in the area.
- Local shop in Ballythomas to provide for basic needs, local meeting room, Local community field in Ballythomas for sports days, Christmas parties etc
- Recycling center needed, awareness raising to prevent rubbish dumping and litter. A modern community hall and sports facility should be built to replace Kilanerin Hall. Community outreach plans for new residents. Improvement of roads and road signs.
- Improve roads, take away old cars in Askinch upper, no bin collection rubbish has to be brought to end of road which is difficult.
- Summer projects that include things like arts and crafts or music suitable for children with special needs where they can meet boys and girls of the same age.
- Community Warden, penny bank for annual trips.
- Some new housing obstructs views of natural beauty and some designs don't fit in with old rural styles. Good library service would benefit young and old alike. Roads in poor condition, hedges overgrown can cause visual hazards, potholes etc.
- Community hall and sports facility to be built as one building, hall should cater for crèche facilities as the area is growing. Provide sheltered housing for elderly.
- Set up a reading club, the issue of newsletter is vital, night classes and training should be accredited.
- Traffic calming measures needed outside Kilanerin school.
- Would like to see the old watering hole in Coolinteggart refurbished.
- Care for the elderly should be a main consideration. Table tennis, basketball etc for children. Realistic goals.
- Toilets for church in Kilanerin.
- Would like to see Knocklahawn lane repaired and opened up as it is lovely for a walk and could be part of bigger walk.
- Condition of roads through Kilanerin is still an utter disgrace. Signs to slow down traffic on side roads needed.
- Refurbishment and renewal of Kilanerin church.
- Not to disturb Kilanerin school grounds do not put road through school grounds.
- Hope the group would make effort to gain funding from national lottery.
- Knock down existing hall and build new proper sized one in its place. Provide more facilities for youth. Roads need urgent repair. Get rid of scrap cars in village. School needs to be kept clean. Parking for cars on school run. Speed limit signs and traffic calming measures urgent. New hall should be made available equally to all sports.

- Build new all and car park on site of priest farmyard if more land is needed should approach landowners about selling some of adjoining land. Car park would be close to hall and church for weddings, funerals etc. Small car park for school. School wall should be moved back 8-10ft to widen road and provide room for footpaths.
- Would like to see more Irish language classes made available for mature students
- Footpaths very important, traffic and calming urgent, car parking very important, public toilet would be handy, improved ESB supply to existing customers.
- Footpaths very important, traffic and calming urgent, car parking very important, street lighting.
- I would like a community centre which would facilitate most of the needs of the community rather than two separate identities and I suggest that this facility be kept in the centre of the village. I would also like to stress that Kilanerin hall has always been as the “Shamrock Hall” and to this end I would like to see the shamrock saved and the date and it be used in the new development as this building was built many years ago for this community and I think this identity should be considered in the development plan.
- I moved to Kilanerin 5yrs ago and seems to have been left behind from the rest of the world. It is wonderful to see so many people in the community willing to work together to reverse this situation. Should KBCDA continue to be led and to carry out its objectives in professional and effective manner it has so far, I have no doubt the community will benefit from its work shortly, thank you. Hacketstown community built a beautiful new hall, similar to that planned for Kilanerin, they may be able to provide valuable advice.
- Start summer project for the children of Kilanerin that would run throughout the summer. Organise trips to the cinema, ice skating, bowling etc also include cookery, art classes etc..... The way this would work is put the outings and prices up on a list in the hall and let the children view them then they can all sign up and pay registration in the hall one night. This would be great for the children of Kilanerin and surrounding areas it would give them plenty to do during the summer and they wouldn't be stuck in the village all summer.
- School and community hall painted first. I would have no problem painting it myself. Would like to see more shrubs and colour in the school grounds and hanging baskets on telephone poles throughout the village. Clean up night each week same day same time people can choose which weeks suits them. Everyone brings more tools, would also create community spirit. Each resident should be encouraged to be responsible of maintenance of own property. I would be delighted to help out I have been a member of the Gorey development group and was instrumental in establishing the children's playground and refurbishment of Gorey Park.
- More child/ youth facilities, more than one sports day a year, tournaments. Indoor soccer/ snooker/ tennis/ computers/ games. Clean up the village, flowers, park area, paint. Improve roads, footpaths, and parking for hall, school and mass.
- Would be great to have a footpath from village to GAA field.
- Cutting back on feeling of the trees in Kilnivor cemetery is urgent. Some tombstones have been broken by falling trees.
- Ecumenical counsellor to be made available.
- Library service.
- Provide pedestrian crossing from school to shop. Put in footpaths and car parking for school.
- Safety in the homes on the roads, children and young people- recreational facilities, worthwhile activities. The elderly –everyone eventually. A pleasant environment for all. Appreciation of heritage perhaps a heritage centre. Cultural activities, art, music, dance, drama, sport, crafts. Promote pride in locality and educate for life satisfaction.
- A community centre that caters for sports, classes, meetings, youth clubs, and other societies would be very useful.
- Speed ramps for village, drive slow signs for leading roads into village. Kilanerin hall to be pulled down.

- Use of Kilanerin notes in local papers is a good way of informing people of events, maybe more use of newspapers to highlight engaging community work.
- Contact other places that have made major changes. Guest speakers or groups dealing with community affairs.
- In relation to the swimming pool I feel the population would render it invaluable, however with the increase in population it may be something to plan for long term.
- Knock down Kilanerin hall and build new one with proper facilities to cater for all age groups. Traffic controlled through villages, roads and footpaths upgraded also put ramps around school and Borleigh Park where children play. Speed signs on all roads leading to village and on all surrounding roads where people can be seen walking daily.
- Kilanerin is slowly expanding with time and attracting family households a family park that caters for all age groups should be considered. Play area with padding for safety, grass area, a few benches and a possible basketball court all distanced from one another. Keep simple with no over elaborate ideas would make it easy to maintain. Allowing room for volleyball nets, concrete chess boards, picnic area etc.
- A.T.M. Machine in village
- Talk to Primary School Children about “Highway Code” and Farm Safety.
- Youth Clubs, Scouts and Cubs
- Public Transport from Connahill to Gorey via Hollyfort
- Refurbish Kilanerin Church and open up the Gallery to the public.
- Kilanerin Church needs indoor painting.
- Would welcome all facilities for children and youth, also training and recreational projects.
- A restaurant/Café would be a focal centre.
- Expansion and better promotion of “Opportunity Knocks”
- A “recording studio” type room to be created in new centre for local bands/musicians to practice in – can be also used as warm-up room for “Opportunity Knocks”
- Have a sitting G.P. Doc in new centre.
- Bigger and better recycling facilities
- More waste disposal bins.
- A small business park should be created to encourage local small businessmen/women to startup with a joint receptionist to administer calls etc.
- Encourage somebody to set up a hostel – bringing tourists/backpackers to the area, or set up a caravan park for same – might be a big attraction during the summer months?
- Every village should have a water pump
- Beside the café mentioned above have a launderette
- Outside picnic area with tables and chairs etc.
- Twin the area with another in say Scotland to promote relationships the same way Gorey is twinned with Oban.
- Have a strawberry fair/puck fair type festival in the summer.

MEETING WITH GROUPS 06th MAY 2004

Kilanerin Board Of Management

- Recreation facilities indoor and outdoor
- Learning support room and education aids
- Office and equipment for School Secretary
- I.T. Room and equipment
- General purpose room and storage room
- Toilet facilities within class-room
- Staff room
- Hard top surface
- P.E. equipment

Parish Finance

- Renovation and renewal of Church
- Roof replacement
- Leak fixed in Tower/Spire
- Extra car parking space
- Resurfacing of present car park
- Renewal of Sanctuary area
- Renewal of lighting
- Painting of Church

Kilanerin Community Alert

- Improvements of signs at Limbrick Cross Roads
- Extension of 30 mph from Village
- Safety improved in all area

Kilanerin Parents Association

- Extra Car parking space near to school
- Barrier at entrance to school
- Flashing amber lights/ more school signs/rumble strips
- Hard court area
- Level grass playing pitch
- New fence surrounding the school

Kilanerin Hall Committee

- More comfortable surroundings.
- Large Sport/playing area
- 2/3 small meeting rooms which could open into one large meeting room
- Better Toilet facilities
- Catering facility

Kilanerin Ballyfad G.A.A.

- Develop 2nd playing pitch
- Build hurling wall
- Upgrade floodlights
- Small enclosed play area for tiny tots
- Provide footpath and lighting from field to village

Kilanerin I.C.A.

- Comfortable surroundings for meetings

- Kitchen facilities alongside meeting room
- I.T. facilities
- Mother & Toddler Group

Kilanerlin Ballyfad Community Games

- Guards on lights, heaters and windows
- New tables and equipment
- Storage space for equipment
- Better training facilities Indoor and Outdoor
- All weather track.

Ballyfad N.S. Board of Management

- Extra lighting for village
- Footpaths along by school
- Speed limits
- Car park to be marked
- Extra space for resource teacher, staff room, office
- Plans to reshape interior of school and build small extension

Ballyfad Hall Committee

- Feasibility of raising the floor level
- Raising all roofs to same level and pitch
- Access to toilets from inside Hall
- New kitchen
- New furniture for hall
- New windows and doors
- Ensure adequate heating and lighting
- Improve drainage
- Storage space

Hollyfort Parish Council

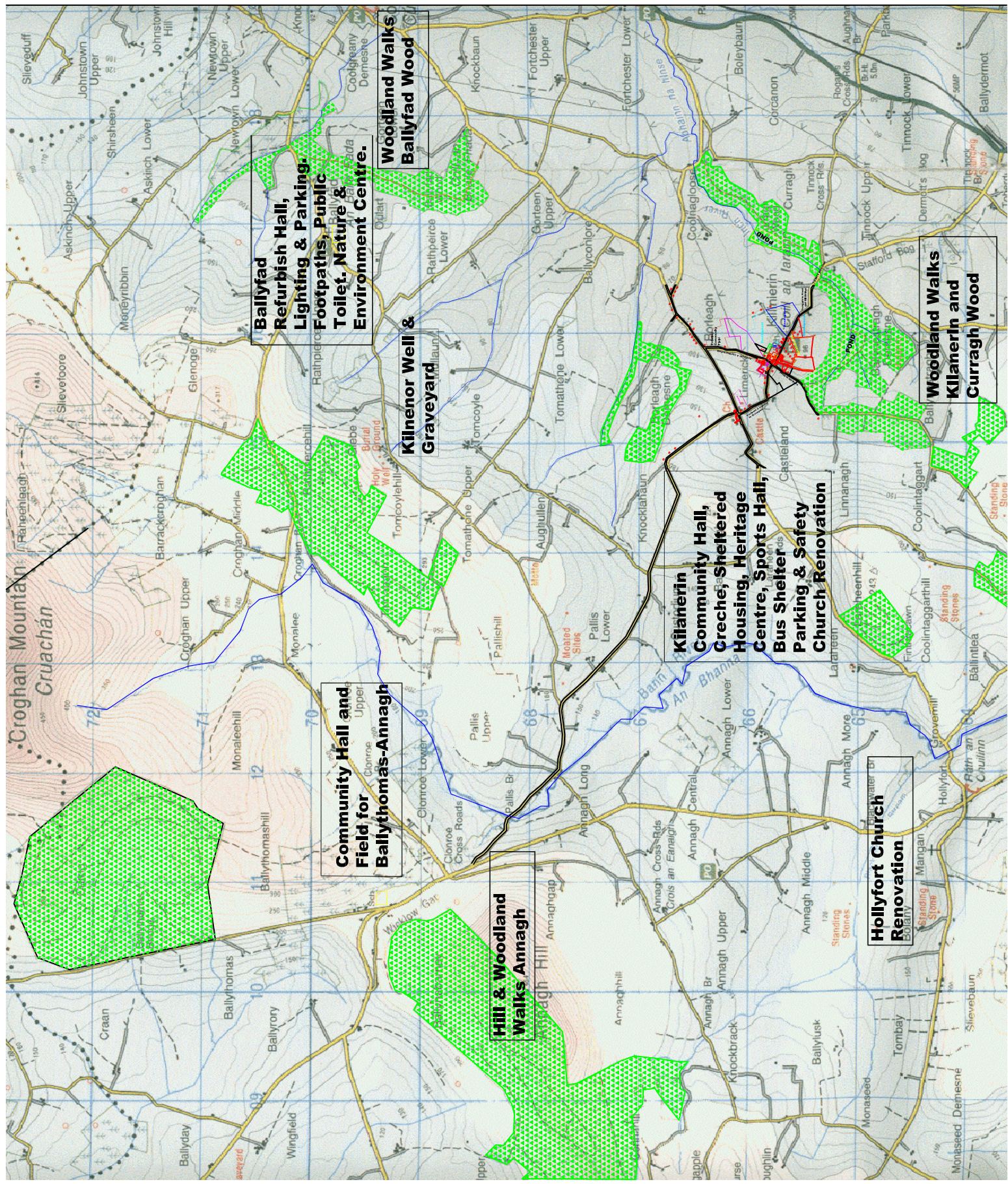
- New Roof
- Guttering
- Plastering
- Ceiling inside Church
- Painting

Ballythomas N.S. Board of Management

- Extra Class Room space
- Meeting Room
- Staff room

COMMUNITY DEVELOPMENT PLAN

[illegible]



Ballyfad Refurbish Hall, Lighting & Public Footpaths, Public Toilet, Nature & Environment Centre.

Woodland Walks Ballyfad Wood

Kilmeragh Well & Graveyard

Community Hall and Field for Ballythomas-Annagh

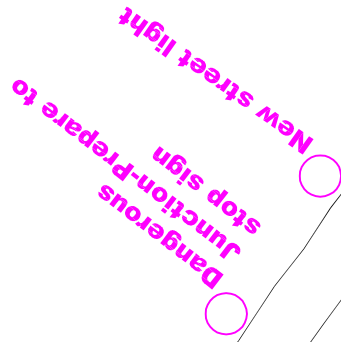
Hill & Woodland Walks Annagh

Kilmeragh Community Hall, Creche, Sheltered Housing, Heritage Centre, Sports Hall, Bus Shelter, Parking & Safety Church Renovation

Hollyfort Church Renovation

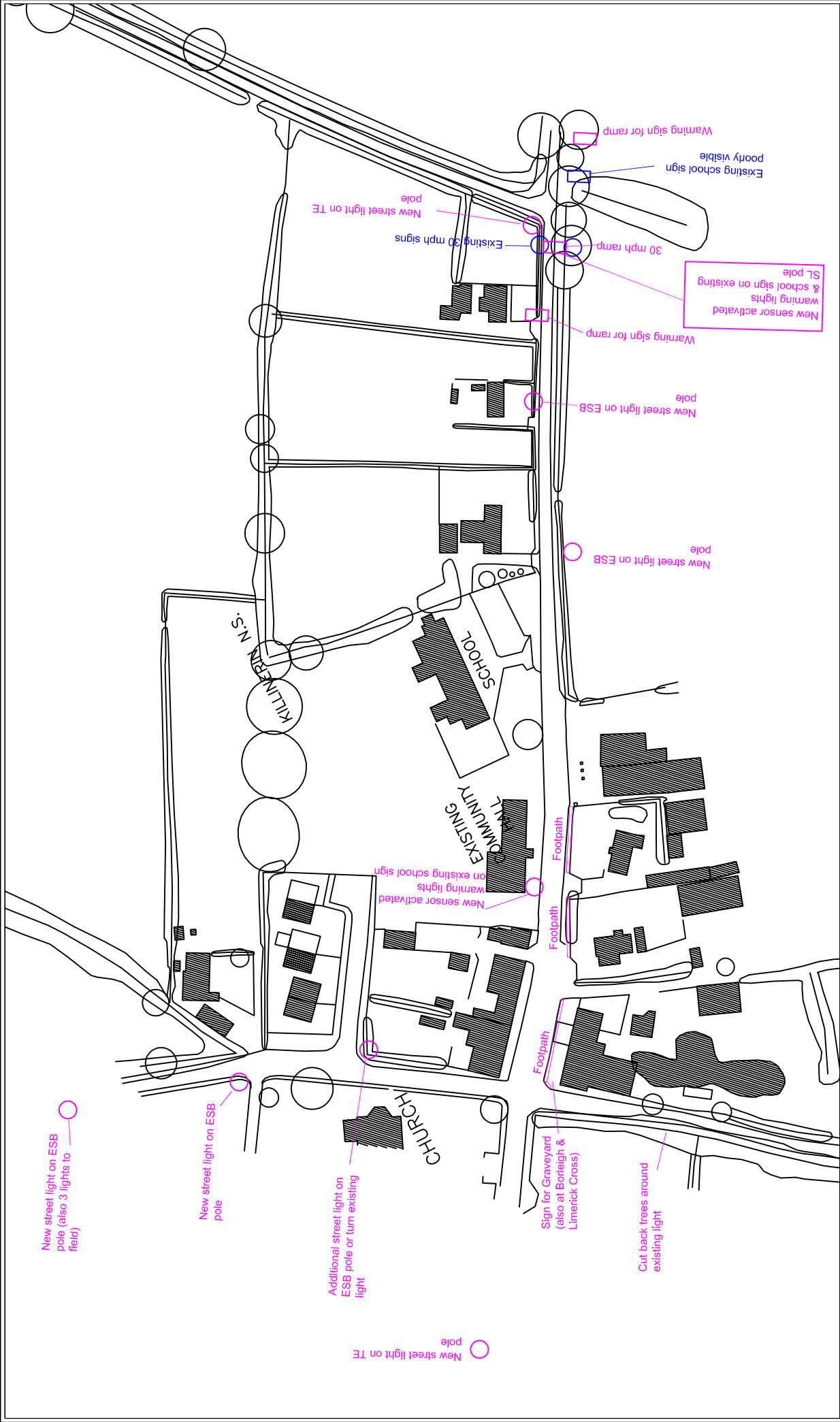
Woodland Walks Kilmeragh and Curragh Wood

A diagram showing a road junction. A road runs horizontally from left to right. A road branches off vertically upwards from the center of the horizontal road. At the junction, there is a 'stop sign' (a circle with a horizontal line) on the horizontal road and a 'New street light' (a circle with a vertical line) on the vertical road. The text 'Dangerous Junction-Prepare to stop' is written along the horizontal road, and 'New street light' is written along the vertical road.



BALLYFAD

PROJECT:	Ballyfad
DRAWING TITLE:	
DATE:	NOVEMBER 2004
CLIENT:	
SCALE:	



PROJECT: Kilanerin - Draft			
DRAWING TITLE:			
DATE: Nov. 2004			
CLIENT:			
SCALE:			
KILANERIN			

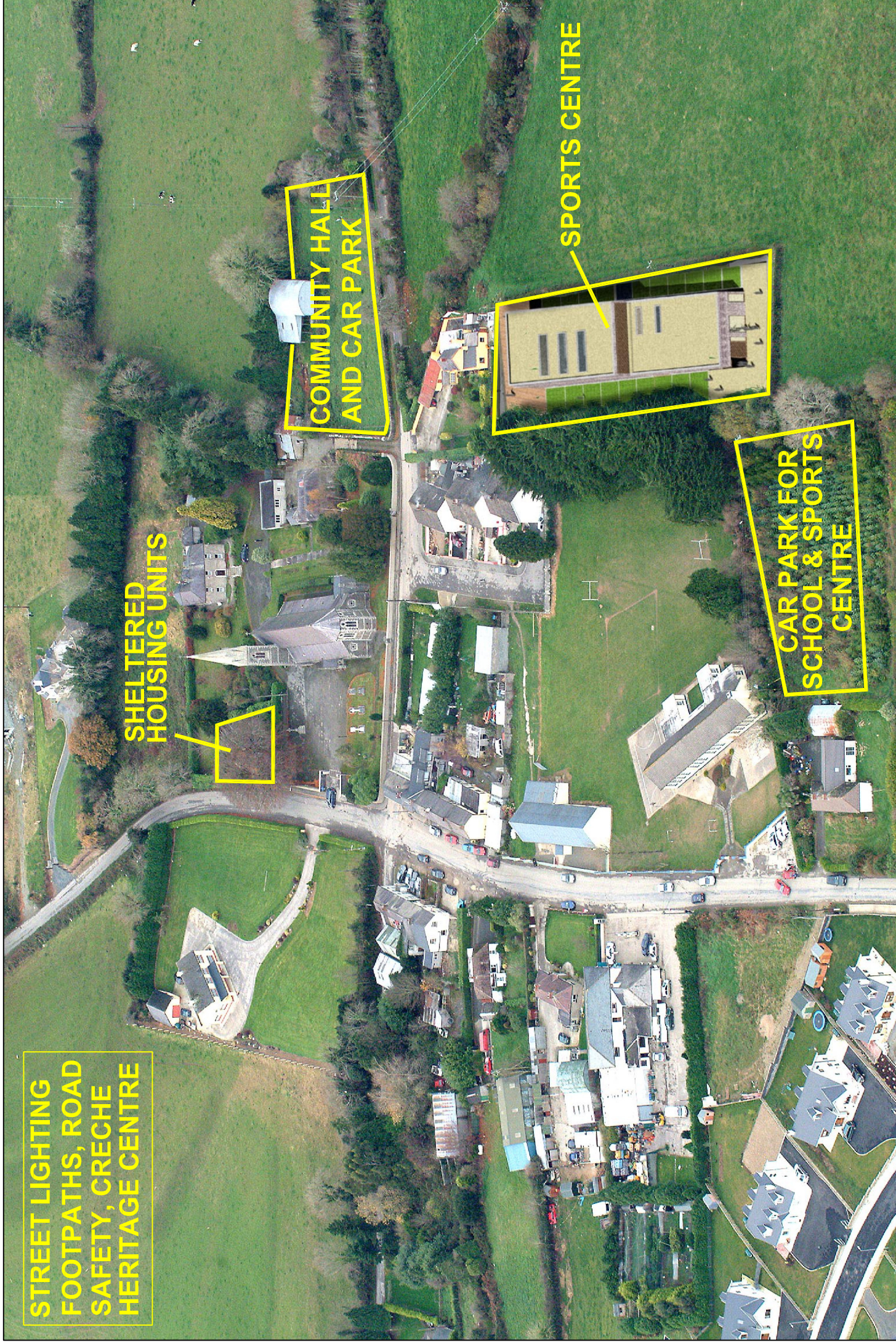
STREET LIGHTING
FOOTPATHS, ROAD
SAFETY, CRECHE
HERITAGE CENTRE

SHELTERED
HOUSING UNITS

COMMUNITY HALL
AND CAR PARK

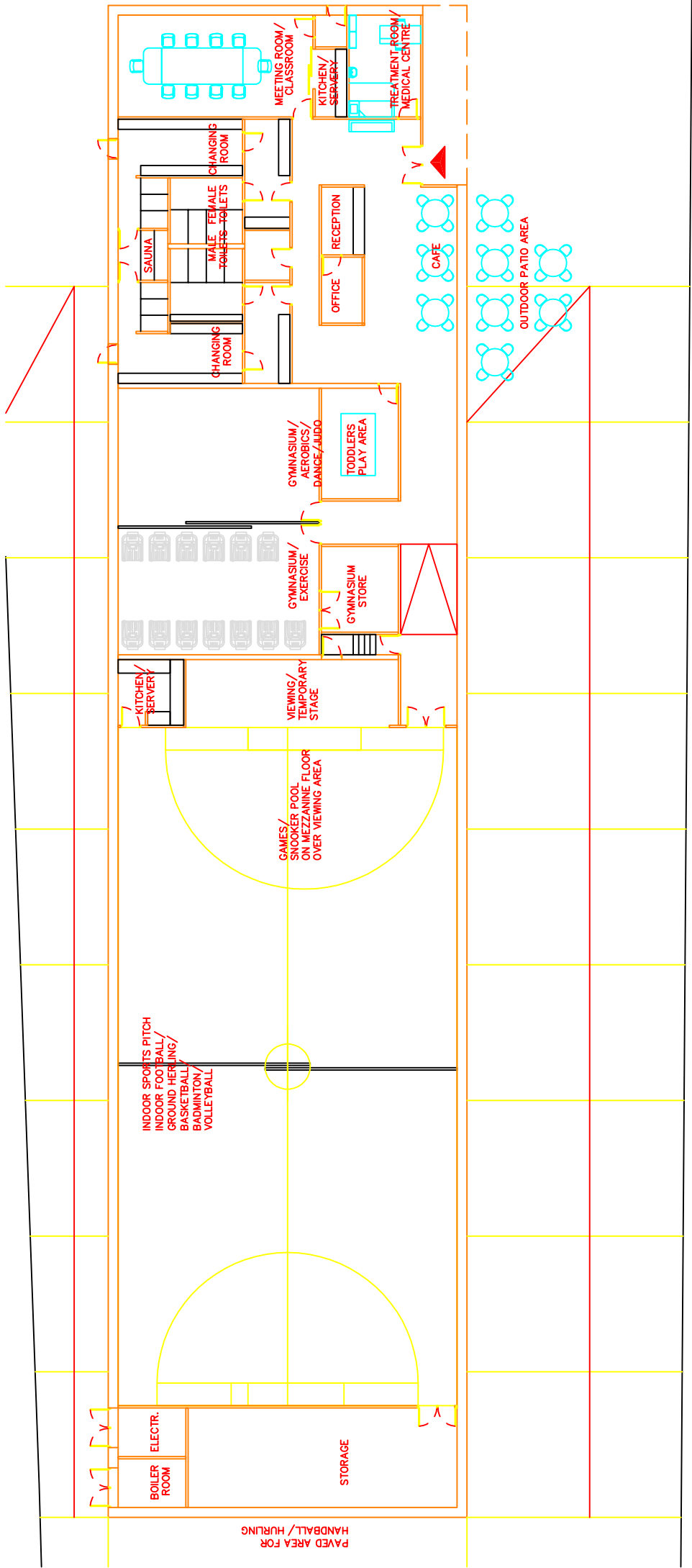
SPORTS CENTRE

CAR PARK FOR
SCHOOL & SPORTS
CENTRE





ENTRANCE TO PROPOSED SPORTS CENTRE



FEASIBILITY STUDY



**KILANERIN-BALLYFAD COMMUNITY
DEVELOPMENT ASSOCIATION**

*COMHARCHUMANN FORBARTHA COILL AN
IARAINN- BAILE FADA*

Feasibility Study

Community Sports Complex

KILANERIN-BALLYFAD-BALLYTHOMAS-ANNAGH-HOLLYFORT

ASSOCIATION BACKGROUND

KILANERIN-BALLYFAD COMMUNITY DEVELOPMENT ASSOCIATION

- The Kilanerin-Ballyfad Community Development Association was established arising out of a public meeting in Kilanerin Hall on the 2nd March 2004.
- The committee of the Association is representative of voluntary groups and associations within the parish and of the different areas within the parish.

OBJECTIVES

- The objective of the Association is to establish what the needs and expectations of the community are and how people would like to see the Kilanerin-Ballyfad area develop over the next 5 – 10 years.
- It is the aim of the committee to develop facilities and projects in line with these needs and expectations for the benefit of all sectors of the community.
- This work will be carried out in co-operation with existing local voluntary, sporting and cultural organisations.

COMMITTEE

- The committee has met on 30 occasions at Kilanerin, Ballyfad, Ballythomas and Annagh. The attendance record at these meetings by committee members has been in excess of 90%.
- The committee has drawn up and adopted a constitution which sets out how the Association is run.
- Sub-committees have been formed dealing with planning requirements, fundraising, grants and area development planning..
- A solicitor and accountant have been engaged and work is under way to incorporate the Association as a limited company.
- The Association is a registered member of Wexford Community Forum.
- It is intended to form the Association into a limited company in line with the professional legal and accounting advice given to us
- Charitable status is currently being applied for which will allow certain tax reliefs to be claimed.
- A Tax Clearance Certificate has been obtained.

FUNDING TO DATE

- Initial funding obtained from Parish Committee, Comoradh'98 and by private no-interest loans.
- A successful fund raising race night was run in August which raised €13,000.
- The Association is currently promoting the Community Voluntary Contribution scheme under which income earning adults are asked to contribute €5 a week.

MEETINGS AND CONSULTATIONS

- Meetings have taken place with officials from Wexford County Council Planning Department regarding suitable locations for community buildings.
- Meetings have taken place with County Council road and safety engineers regarding road safety and traffic calming in Kilanerin, Ballyfad, Ballythomas and at Limbrick cross.
- Meetings have been held with Wexford Organisation for Rural Development (WORD) officials and Mr John O' Sullivan, Chairman and Mr Bill Walsh, Chief Executive have addressed the Committee.
- Discussions have been held with other voluntary organizations and institutions in Wexford and Dublin who have recently carried out similar community developments and a number of facilities have been visited.
- An invitation to make submissions to the Committee was issued to 26 parish bodies and organizations. Consultations and meetings held with the following:
 1. Kilanerin Board Of Management
 2. Parish Finance
 3. Kilanerin Community Alert
 4. Kilanerin Parents Association
 5. Kilanerin Hall Committee
 6. Kilanerin Ballyfad G.A.A.
 7. Kilanerin I.C.A.
 8. Kilanerin Ballyfad Community Games
 9. Ballyfad N.S. Board of Management
 10. Ballyfad Hall Committee
 11. Hollyfort Parish Council
 12. Ballythomas N.S. Board of Management
 13. Kilanerin IFA.
- Agreements in principle have been reached with the Parish Finance Committee and local landowners regarding possible sites for the community hall and sports centre in Kilanerin village.
- Submissions have been made to Wexford County Council on housing developments in Kilanerin village.
- Discussions have been held with four property developers intending to develop sites in the Kilanerin area regarding possible contributions to development of community facilities. A positive response was received from all four.
- A presentation of the work and objectives of the Association was made to the Gorey District Committee of Wexford County Council.
- Discussions have taken place with the Kilnenor Graveyard restoration Committee and the association will be assisting its work.
- A meeting was held in February 2005 with the residents of Hollyfort village and surrounding area.

COMMUNITY SURVEY

- A database of all residents over 18 years of townlands within the community was compiled and a survey of all households and local organisations has been completed. A total of 1284 surveys were distributed to approximately 600 households.
- Of the total of 1284 surveys distributed, 885 were returned which is a 69% return rate and a good response for this type of survey.
- Support for the aims and objectives of the Association was 83% positive and only 2% negative.
- The results of the Community Survey are included in the appendix of this report.

THE COMMUNITY DEVELOPMENT PLAN

- A draft community development plan for the next 10 years has been drawn up based on the results of a survey of all residents, consultation with existing groups and organisations, and an assessment of community needs and priorities. Outline costings of the projects in the plan have been made.
- The plan was adopted at a public meeting in Kilanerin hall on the 26th November 2004.
- Architects have been appointed to draw up outline plans for the sports centre and other community facilities.
- A voluntary community contribution scheme & draw to raise long term funding is currently being promoted through out the community. Response to date has been excellent with upwards of 400 members currently registered.

Feasibility Study

Community Sports Complex

Executive Summary

The committee of the Kilanerín-Ballyfad Community Development Association have, through a comprehensive Community Survey, identified the provision of a Community Sports Centre as a vital objective in the development of the area over the next generation.

The current Community Hall dates back to 1929 and can no longer fulfill the requirements of the areas population.

The population of the Kilanerín, Ballyfad, Ballythomas, Annagh and Hollyfort areas is expanding rapidly within the Gorey Rural growth region. Actual growth in the Gorey Rural Area for the five years to 2002 was 24.1%. Central Statistic Office population projections for 2006-2036, the time-span for which the proposed centre will operate, is that the population of the Republic of Ireland will rise from 4.2 million currently to 5.8 million. It is expected that the North Wexford area will receive over and above the average 38% projected population increase.

The Kilanerín-Ballyfad Community Development Association take the view that the provision of facilities in the village of Kilanerín is vital to the balanced growth of the area and will provide a much needed community resource for the continued vibrancy of the area.

Community support for the facility is expressed in the Community Survey and in the financial support pledged for the project by the members of the community. The committee overseeing the development is aware of the financial and operational pitfalls which may occur in the various stages of construction and running of the facility and have planned accordingly.

There is no comparable facility available in Gorey. There are somewhat similar facilities available in Arklow and Courtown which are already experiencing capacity issues.

The objective of the complex is to provide a focal point for the voluntary associations within the community to operate from and increase the participation levels in physical activity in the general hinterland of North Wexford.

Social trends like increasing obesity make a facility like this a necessity for a growing community like Kilanerín-Ballyfad.

Kilanerin-Ballyfad Community Development Association should be aware of the following Key Considerations in determining the feasibility of its Community Sports Centre.

1. Population
2. Serviced Hinterland
3. Community Sports Centre – Size and Role
4. Comparable Facilities
5. Project Preplanning
6. Design and Management Team
7. Planning Process
8. Construction Methods
9. Pre-Development Financial Position
10. Complex Objectives
11. Reconciliation of non-compatible objectives
12. Management Structures

Population

To establish the feasibility of a Community Sports Centre, Kilanerin-Ballyfad Community Development Association has examined the population trends within the catchment area using the Community Survey as a support tool.

The survey results outlined the following based on a 69% return on surveys.

SUMMARY

	Male	Female	Total	%
Under 5	81	82	163	9.7
Primary	128	123	251	14.9
Post-primary	110	82	192	11.4
Third-level	32	37	69	4.1
Under 65	532	490	1022	60.7
Over 65	80	70	150	8.9
	882	802	1684	

From the above graph a total of 1684 residents were included in the 69% who replied to the survey. When factored up to 100% this means that there are approximately 2440 residents currently in the community area. If increases in housing continue at the same rate as the last 7 years, the number of residents is likely to be around 4,000 by 2012.

Currently 60% per cent of residents work within 10 miles of home.

The village of Kilanerin is fortunate to have a recently upgraded water and sewerage scheme. The imminent Gorey Bypass with a major junction at Tinnock will see improved access to the area within the next three years. Existing and proposed developments at Kilanerin Village will see a further increase in the population of the area which is likely to be added to by recent changes in planning requirements for rural housing.

Serviced Hinterland

The population of the area as outlined is dispersed throughout the area with local centres at Kilanerin Village, Ballyfad Village, Ballythomas, Hollyfort and Annagh. Neighbouring communities within the serviced hinterland include Coolgraney, Inch, Castletown, Tarahill, The Rock and Monaseed.

It is also appropriate to include Gorey and Arklow as there is no doubt that there will be an overspill from both of these large population centres.

Community Sports Centre – Size and Role

The Kilanerin-Ballyfad Community Development Association feel that future population projections along with a current needs deficit, outlines a necessity to develop a state of the art Community Sports Centre.

The complex will be approximately 12,000 sq feet and will be located in Kilanerin Village centre on land behind the local Primary School. This land is parish land and has been made available to Kilanerin-Ballyfad Community Development Association by the local parish.

The Community Sports Centre will include the following facilities:-

- Indoor Sports Hall
- Fitness Gym
- Aerobics Studio
- Soft Play Area
- Changing Rooms
- Meeting Room
- Kitchen/Servery
- Treatment Room/Medical Centre
- Office
- Reception and Waiting Area
- Sauna
- Outdoor Patio Area
- Parking Facilities
- Storage

The indoor sports hall will be suitable for Basketball, Badminton, Indoor Bowls, Indoor Soccer, Indoor Gaelic Football and Hurling Skills, Yoga, Martial Arts, Indoor Hockey etc.

It will also be suitable for Community Shows, Drama, Community Meetings, Active Retirement Group, Parent & Toddler Group, Irish Dancing etc.

It will be developed to be as flexible as possible to accommodate as many voluntary community associations as is possible.

It is important to note that due to its proximity to the local school the meeting room will be available and used as a necessary overflow room and will be developed accordingly.

The proximity to the local school will ensure maximum benefit to the children of the area.

Comparable Facilities

There are no comparable facilities within the immediate area. The current Community Hall is in existence since 1929 and can no longer provide for the increased needs of the locality.

There is no comparable facility available in Gorey. There are somewhat similar facilities available in Arklow and Courtown which are already experiencing capacity issues.

This facility is fundamentally different to each of these facilities as it will be a community resource rather than the Pay & Play facilities which are available in Arklow and Courtown.

The Naomh Eanna GAA Club in Gorey have a sports complex which is primarily used by club members and occasional private bookings.

Project Preplanning

The Kilanerin-Ballyfad Community Development Association have visited similar centres nationally and consider the proposed plans to be a viable mix of what is best practice within the Community Sports Centre area.

The building size will be sufficient to serve the local area needs into the future.

We wish to consider the visual impact of the building on the immediate village area.

We feel that we can financially and operationally manage such a project.

We have had preliminary plans drawn up by an architect and held pre-planning discussions with the Wexford County Council Planning Officer and Fire Officer.

Design and Management Team

The Kilanerin-Ballyfad Community Development Association will appoint a professional management team. The team will include a development committee whose members will have requisite business, construction and administrative skills.

They will have professional advice from the following:-

SOLICITORS:	Donal M O' Sullivan & Co., Arklow.
ACCOUNTANT:	Donie Noonan, Ballynestragh
ARCHITECTS :	Horan Keogan Ryan, Dublin.

Planning Process

The Kilanerin-Ballyfad Community Development Association are aware that the planning process will take approximately six months. It is fair to assume that Wexford County Council will require further particulars and some modifications.

These requirements will be communicated to Kilanerin-Ballyfad Community Development Association two months from the first application. It will take the Kilanerin-Ballyfad Community Development Association two months to finalise the required information and Wexford County Council a further two months for deliberations.

Should Kilanerin-Ballyfad Community Development Association decide to construct the complex by way of contractor, no agreement on price should be finalised until Wexford County Council confirms its terms of planning and fire cert requirements.

Wexford County Council may impose planning conditions which impinge adversely on the Kilanerin-Ballyfad Community Development Association needs. Should this happen the association will need to negotiate with the planning authority for their removal or modification.

Construction Methods

There are two methods of construction available to Kilanerin-Ballyfad Community Development Association. The association can avail of direct labour or appoint a contractor. There are advantages to both options.

Direct Labour

Should the association opt for direct labour it will achieve a cost saving in the region of 25%. The association are aware of the following potential problems using this method.

- Full completion of work by each sub-contractor
- Adequate quality of each sub-contractors work
- Objective criteria for pricing sub-contracts, criteria based on track record, price, ability to deliver within deadlines etc.
- Purchasing policies.
- Material storage.
- Material pilferage.

Other indirect considerations and possible influences will be:-

- Previous funding support from local suppliers.
- Association members who are tradesmen.

In the event of the association accepting direct labour they will appoint a clerk of works with accountability to a supervising committee. The terms of reference of the architect will be clearly defined to project manage the construction if direct labour is chosen.

Contractor

The appointment of a contractor will prevent these problems but will ensure a 25% increase in the project cost.

Should the association decide to appoint a contractor they will have a tender document prepared. This document will list the various stages of construction.

- Preliminaries
- Site Preparation
- Foundations & Floors
- Steelwork & Cladding
- Blockwork & Stonework
- Electrical
- Mechanical
- Plastering
- Tiling
- Painting

All PC Sums will be eliminated in favour of fixed prices. The committee will examine the components of the contract and ascertain where there are price differences on each tender. The contractor will be consulted where necessary. It may be prudent to extract the best value contract price from the sum of the components and enter into post tendering discussions with an individual contractor.

Pre-Development Financial Position

The association will examine its ability to complete the project based on the following criteria.

- Amount of funds on hand
- Ability of the association in raising funds
- Commitment of the local community to raise funds
- Day to day running costs of the association
- Are financial institutions favourably disposed to lending to Kilanerin-Ballyfad Community Development Association
- What are the terms of such lending, are independent guarantees required?

Complex Objectives

The objectives of the Community Sports Complex will be:-

- To create a focal point for community groups and activities
- To increase social interaction within the community.
- To improve the general fitness of the local community.
- To improve the general health of the local community.
- To provide educational opportunities.

Reconciliation of non-compatible objectives

If it transpires that Kilanerin-Ballyfad Community Development Association will not achieve its dual aims of financial stability and greater community participation rates the association are aware of this possibility and are prepared to compromise to avoid financial instability.

Management Structures

Kilanerin-Ballyfad Community Development Association clearly understand that the running of the Community Sports Centre will require a strong management structure. The association will ensure wider community awareness is created for the complex by appointing a suitably qualified person to make end users aware of the centre and by allowing an appropriate marketing budget.

Employees will be required for reception, fitness gym, sports hall and care taking duties. The management committee will be aware of adequate staffing and productivity levels.

There will be public and employers liability insurance obligations and may be additional obligations for gym instructors and users.

The association will appoint an audit committee to oversee the daily management of the facility, the financial management of the facility, compliance with employment legislation and compliance with revenue legislation.

Building Financial Projections**Income**

Community contribution scheme	€5 x 52 Weeks x 400 Members €104,000 per annum
Revenue Rebate	€31,200 per annum
Annual fund Raising	€25,000 per annum
Annual Income	€160,200
Sports Capital Grant	€300,000
Additional Grant Aid	€75,000
Year One Income	€535,200
Year Two Income	€160,200
Year Three Income	€160,200
Year Four Income	€160,200
Year Five Income	€160,200
Year Five Accumulation	€1,184,000

Expenditure

General Construction Contract	€550,000
Fitting	€150,000
Mechanical & Electrical	€100,000
Planning Fees	€150
Legal Fees	€10,000
Fire Cert	€3,500
Professional Fees	€60,000
Air Conditioning	€25,000
Sports Hall Floor Fitting	€100,000
Changing Rooms	€25,000
Sauna	€5,000
Fitness Equipment	€90,000
Kitchen/Servery Fit Out	€8,000
Reception/Office Fit Out	€10,000
Loan Interest Service	€50,000
Total Cost	€186,650

Five Year Expenditure over Income €2,650

Operational Financial Projections**Income**

Membership	(200 members @ €300 per annum)	€75,000
Pay & Play Gym	(15 daily @ €6.00)	€32,400
Fitness Classes	(10 daily @ €6.00)	€21,600
Sports Hall Hire	(4 hours daily @ €30 per hour)	€43,200
Treatment Room Hire		€5,000
Vending		€7,000
Sports Goods		€2,500

Annual Projected Income **€186,700**

Expenditure

Accountancy	€5,000
Public Liability	€4,000
Employers Liability	€1,000
Wages	€120,000
Heat & Light	€13,500
Postage & Stationary	€1,500
Repairs & Maintenance	€2,500
Telephone	€1,500
Stock Purchases	€5,000
Rates	€5,000
Cleaning & Materials	€1,500
Bank Interest & Charges	€500

Annual Projected Expenditure **€161,000**

Revenue/Building Reserve **€25,700**

VOLUNTARY CONTRIBUTION SCHEME

How much will it cost to do all of this ?

Projected cost is between €3.5 and €4.0 million.

Where will it come from ?

Grants – €1.5 million

Contributions, tax refunds and other events- €1.0 million

Community voluntary contribution- €1.0 million

How much do I have to pay?

A minimum of €5.00 per week or €260 a year. You can contribute more if you wish.

What do I get ?

Those who pay become members and will get members benefits and the right to vote at agms. There will be a member's draw every 3 months.

New members after the 1st Feb. 2005 pay a joining fee.

How can I pay ?

€260 once a year, €130 every 6 months or €22 monthly by direct debit.

How long do I have to pay for?

The development plan is based on a 10 year program but you may withdraw at any time.

What happens if not enough people agree to pay ?

If less than 400 people sign up by the 1st February 2005 the development plan will be shelved, the committee will review its position and all money will be refunded.

KILANERIN-BALLYFAD COMMUNITY DEVELOPMENT ASSOCIATION

VOLUNTARY COMMUNITY CONTRIBUTION SCHEME



COMMUNITY DEVELOPMENT PLAN 2005-2015



WHY DO WE NEED A DEVELOPMENT PLAN ?

- *Shamrock Hall -192 9.*
- *Group Water Scheme -1965*
- *Community Field – 1975*
- *?? ?? 2005*
- *By 2015 the population will be over 4,000.*
- *A lot of these will be young people and young families.*
- *New facilities are needed for young people.*
- *All residents need places to meet and socialise.*
- *Existing buildings need maintenance and preservation.*

HOW WAS THE PLAN DRAWN UP?

- *Community survey -69% response -83% support.*
- *Meetings with parish clubs and organizations.*
- *Meetings with Council and architects.*
- *Committee discussions.*
- *Plan approved at Public Meeting 26th Nov. 2004.*

WHAT IS IN THE DEVELOPMENT PLAN ?

- *Traffic calming, street lighting, footpaths, car parking in Ballyfad, Ballythomas, Kilanerin.*
- *Assist refurbishment of existing hall in Ballyfad.*
- *Woodland walks and Nature Centre in Ballyfad.*
- *Assist construction of local hall in Ballythomas.*
- *Help develop Community Field in Ballythomas.*
- *A modern Community Hall in Kilanerin.*
- *A modern Indoor Sports Facility in Kilanerin.*
- *Provide Sheltered Housing in Kilanerin.*
- *Assist Kilanerin and Hollyfort churches.*
- *Kilninor Graveyard and set up Heritage Centre.*
- *Support Elderly and Active Retirement Groups.*
- *Support Youth Club and Tidy Villages Group.*
- *Run Night Classes and Courses.*
- *Seek local area plan from Council.*
- *Ensure that affordable housing for local people.*
- *Encourage industry and business in the area.*

ANNUAL REPORT 2004



**KILANERIN-BALLYFAD COMMUNITY
DEVELOPMENT ASSOCIATION**

*COMHARCHUMANN FORBARTHA COILL AN
IARAINN- BAILE FADA*

**2004 ANNUAL REPORT AND FINANCIAL
STATEMENT**

March 2004 - March 2005

KILANERIN-BALLYFAD-BALLYTHOMAS-ANNAGH-HOLLYFORT

COMMITTEE 2004

Chairperson: Seamus Hughes, Tinnock Upper
Vice-Chairperson: Peter O' Connor, Kilanerin
Secretary: Margaret Jones, Pallis Lower
Joint Treasurer: Lilly Boland, Pallis Lower
Joint Treasurer: Noel Murphy, Kilanerin
P.R.O.: Mary Darcy, Rathpierce Upper
Committee: John Bardon, Borleagh
Michael Darcy, Annagh Lower
Francis Fanning, Ahullen
Liam Fanning, Clonroe
Donal Hayden, Clonroe
Carmel Hughes, Kilanerin
Paddy Hughes, Annaghmore
Nancy Kavanagh, Coolintaggart
Patricia Nolan, Barnland
Anthony O' Donohoe, Annagh
Edmund Sheridan, Curragh

SOLICITORS: Donal M O' Sullivan & Co., Arklow.

ACCOUNTANT: Donie Noonan, Ballynestragh

ARCHITECTS : Horan Keogan Ryan, Dublin.

BANK : Ulster Bank, Gorey.
Bank of Ireland, Carnew.

KILANERIN-BALLYFAD COMMUNITY DEVELOPMENT ASSOCIATION

- The Kilanerin-Ballyfad Community Development Association was established arising out of a public meeting in Kilanerin Hall on the 2nd March 2004.
- The committee of the Association is representative of voluntary groups and associations within the parish and of the different areas within the parish.

OBJECTIVES

- The objective of the Association is to establish what the needs and expectations of the community are and how people would like to see the Kilanerin-Ballyfad area develop over the next 5 – 10 years.
- It is the aim of the committee to develop facilities and projects in line with these needs and expectations for the benefit of all sectors of the community.
- This work will be carried out in co-operation with existing local voluntary, sporting and cultural organisations.

COMMITTEE

- The committee has met on 30 occasions at Kilanerin, Ballyfad, Ballythomas and Annagh. The attendance record at these meetings by committee members has been in excess of 90%.
- The committee has drawn up and adopted a constitution which sets out how the Association is run.
- Two youth representatives, Anthony O' Donohoe and Edmund Sheridan, have been co-opted on to the committee.
- Sub-committees have been formed dealing with planning requirements, fundraising, grants and area development planning..
- A solicitor and accountant have been engaged and work is under way to incorporate the Association as a limited company.
- The Association is a registered member of Wexford Community Forum.
- It is intended to form the Association into a limited company in line with the professional legal and accounting advice given to us
- Charitable status is currently being applied for which will allow certain tax reliefs to be claimed.
- A Tax Clearance Certificate has been obtained.

FUNDING TO DATE

- Initial funding obtained from Parish Committee, Comoradh'98 and by private no-interest loans.
- A successful fund raising race night was run in August which raised €13,000.

- The Association is currently promoting the Community Voluntary Contribution scheme under which income earning adults are asked to contribute €5 a week.

MEETINGS AND CONSULTATIONS

- Meetings have taken place with officials from Wexford County Council Planning Department regarding suitable locations for community buildings.
- Meetings have taken place with County Council road and safety engineers regarding road safety and traffic calming in Kilanerin, Ballyfad, Ballythomas and at Limbrick cross.
- Meetings have been held with Wexford Organisation for Rural Development (WORD) officials and Mr John O' Sullivan, Chairman and Mr Bill Walsh, Chief Executive have addressed the Committee.
- Discussions have been held with other voluntary organizations and institutions in Wexford and Dublin who have recently carried out similar community developments and a number of facilities have been visited.
- An invitation to make submissions to the Committee was issued to 26 parish bodies and organizations. Consultations and meetings held with the following:
 1. Kilanerin Board Of Management
 2. Parish Finance
 3. Kilanerin Community Alert
 4. Kilanerin Parents Association
 5. Kilanerin Hall Committee
 6. Kilanerin Ballyfad G.A.A.
 7. Kilanerin I.C.A.
 8. Kilanerin Ballyfad Community Games
 9. Ballyfad N.S. Board of Management
 10. Ballyfad Hall Committee
 11. Hollyfort Parish Council
 12. Ballythomas N.S. Board of Management
 13. Kilanerin IFA.
- Agreements in principle have been reached with the Parish Finance Committee and local landowners regarding possible sites for the community hall and sports centre in Kilanerin village.
- Submissions have been made to Wexford County Council on housing developments in Kilanerin village.
- Discussions have been held with four property developers intending to develop sites in the Kilanerin area regarding possible contributions to development of community facilities. A positive response was received from all four.
- A presentation of the work and objectives of the Association was made to the Gorey District Committee of Wexford County Council.
- Discussions have taken place with the Kilnenor Graveyard restoration Committee and the association will be assisting its work.
- A meeting was held in February 2005 with the residents of Hollyfort village and surrounding area.

#COMMUNITY SURVEY

- A database of all residents over 18 years of townlands within the community was compiled and a survey of all households and local organisations has been completed. A total of 1284 surveys were distributed to approximately 600 households.
- Of the total of 1284 surveys distributed, 885 were returned which is a 69% return rate and a good response for this type of survey.
- Support for the aims and objectives of the Association was 83% positive and only 2% negative..

PUBLIC FUNDING APPLIED FOR

- A grant of €6,900 has been obtained from WORD towards the community survey and feasibility study.
- A local amenity grant of €1,000 has been received from Wexford County Council towards the Tidy Villages effort.
- Road improvement and road safety proposals for Kilanerin, Ballyfad and Ballythomas have been drawn up costing a total of €57,000. Of this approximately 80% has been met by co-funding grants from WORD and Wexford County Council.
- A community worker has recently been appointed under the Rural Social Scheme and will be engaged in carrying out community improvement works.
- Grants for the above work have been secured from the following organizations:
 - Wexford Organisation for Rural Development (WORD)
 - Wexford County Council (Amenity Grant)
 - Wexford County Council (Road, Lighting, Safety and Footpath Improvements)
- Grant Applications have been made to:
 - Dept of Community Affairs
 - The Ireland Funds
 - Gorey Community Development Forum

FUNDING ASSISTANCE

Funding and assistance has been given by the Association to the following organisations:

- Kilanerin-Ballyfad Youth Club
- Hollyfort Church Restoration Fund
- Gap Celtic.
- Kilanerin Parent and Toddler Group
- Kilanerin Tidy Villages Group
- Ballyfad Tidy Villages Group

- The amount of €5,000 has been committed to assist the site purchase for Ballythomas Community Hall.
- The Association will be making a significant contribution towards the provision of toilet facilities, new windows and painting of Ballyfad Hall.
- The Association has agreed to make a significant contribution towards the cost of Kilanerin church renovation work over the coming years.

THE COMMUNITY DEVELOPMENT PLAN

- A draft community development plan for the next 10 years has been drawn up based on the results of a survey of all residents, consultation with existing groups and organisations, and an assessment of community needs and priorities. Outline costings of the projects in the plan have been made.
- The committee wishes to thank John Bardon, Enda MacDonald, Francis Fanning and Peter O' Connor made individual submissions on the development plan.
- The plan was adopted at a public meeting in Kilanerin hall on the 26th November 2004.
- Architects have been appointed to draw up outline plans for the sports centre and other community facilities.
- A voluntary community contribution scheme & draw to raise long term funding is currently being promoted through out the community. Response to date has been excellent with between up 340 members expected to register.

OTHER ACTIVITIES

- A successful community logo competition was organized and over 100 entries received.
- The name stones at Kilanerin were engraved with the financial assistance of the Comoradh 98 committee.
- Litter Bins for Kilanerin, Ballyfad and Ballythomas have been purchased.
- Discussions have been held with Coillte regarding the development of Woodland Walks.
- Wexford County Council have been invited to send a speaker to address the committee on the advantages and disadvantages of drawing up a Local Area Plan for Kilanerin Village.
- Information has been obtained on the Community Broadband Grants scheme operated by the Dept. of Communications. At present the grants levels (20%) and the numbers required to subscribe would not make it viable for a small community like Kilanerin-Ballyfad. Information is being sought on wireless and satellite options.
- Two members of the committee have attended a Project Management Course.

WORK PROGRAM FOR 2005

Subject to the approval of the AGM the following work program is planned for 2005:

1. Finalise Community Voluntary Contribution Scheme.
2. Complete road, footpath and general safety improvements in Kilanerin, Ballyfad and Ballythomas and apply for further improvement works.
3. Constitute Kilanerin-Ballyfad Community Development Association as a limited company, appoint auditors and apply for charitable status.
4. Put in place formal legal agreements regarding the provisionally agreed sites for the Community Hall, School Car Park and Sports Centre.
5. Finalise layout and plans for Sports Centre and apply for planning permission. Our objective is to have obtained planning permission by the end of 2005.
6. Apply to Sport Council/National Grant towards Sports Centre in January 2006.
7. Continue to apply for grants and public funding from local and national bodies.
8. Assist purchase of site for, and construction of, Ballythomas School/Community Hall.
9. Help develop Community Field in Ballythomas.
10. Assist renovation of Ballyfad Hall.
11. Assist restoration of Kilniner Graveyard and apply for Heritage Council Grant.
12. Continue to support the activities of Tidy Villages Groups
13. Continue to support the activities of Parish Youth Club
14. Develop Woodland Walks and local Tourism Guide in co-operation with Coillte.
15. Investigate funding for Sheltered Housing projects and draw up proposal in conjunction with relevant parish and state organizations.
16. Draw up program of Night Classes and Courses for Autumn/Winter 2005.
17. Lobby for affordable housing in the area for young people from the Community.
18. Encourage industry and business providing local employment to set up in the area.

**KILANERIN BALLYFAD COMMUNITY DEVELOPMENT ASSOCIATION
COMHARCHUMANN FORBARTHA COILL AN IARAINN BAILE FADA**

**INCOME AND EXPENDITURE
10th MARCH 2004 TO 21ST FEBRUARY 2005**

INCOME		EXPENDITURE	
Finance Committee	€ 5,000.00	Survey/Brochures	€2,401.92
Anon C/O N. Murphy	€6,000.00	Amenities	€1,752.32
Comorodh '98	€ 250.00	Logo	€ 270.00
N. Murphy (Litter Bins)	€ 200.00	Postage, Stationery, Ink Cartridge, photocopying	€1,008.41
Wexford Co Council Amenity Grants	€18,000.00	Wexford Planning Office	€ 92.70
Race Night	€13,239.00	Hollyfort Church	€1,000.00
		Kilanerin Ballyfad Youth Club	€1,000.00
		Gap Celtic	€ 300.00
		Kilanerin Parent/Toddler	€ 300.00
		Bank Charges	€ 9.75
		Flower Bouquet Get Well wishes	€ 25.00
Total Income	€42,689.00	Total Expense	€8,160.10
		Nett Balance	€ 34, 528.90
	€42,689.00		€42,689.00

***** Payment to R.S.S. re footpaths in Ballyfad, Kilanerin and Ballythomas outstanding

***** Grant for €6,900 approved by WORD awaiting payment